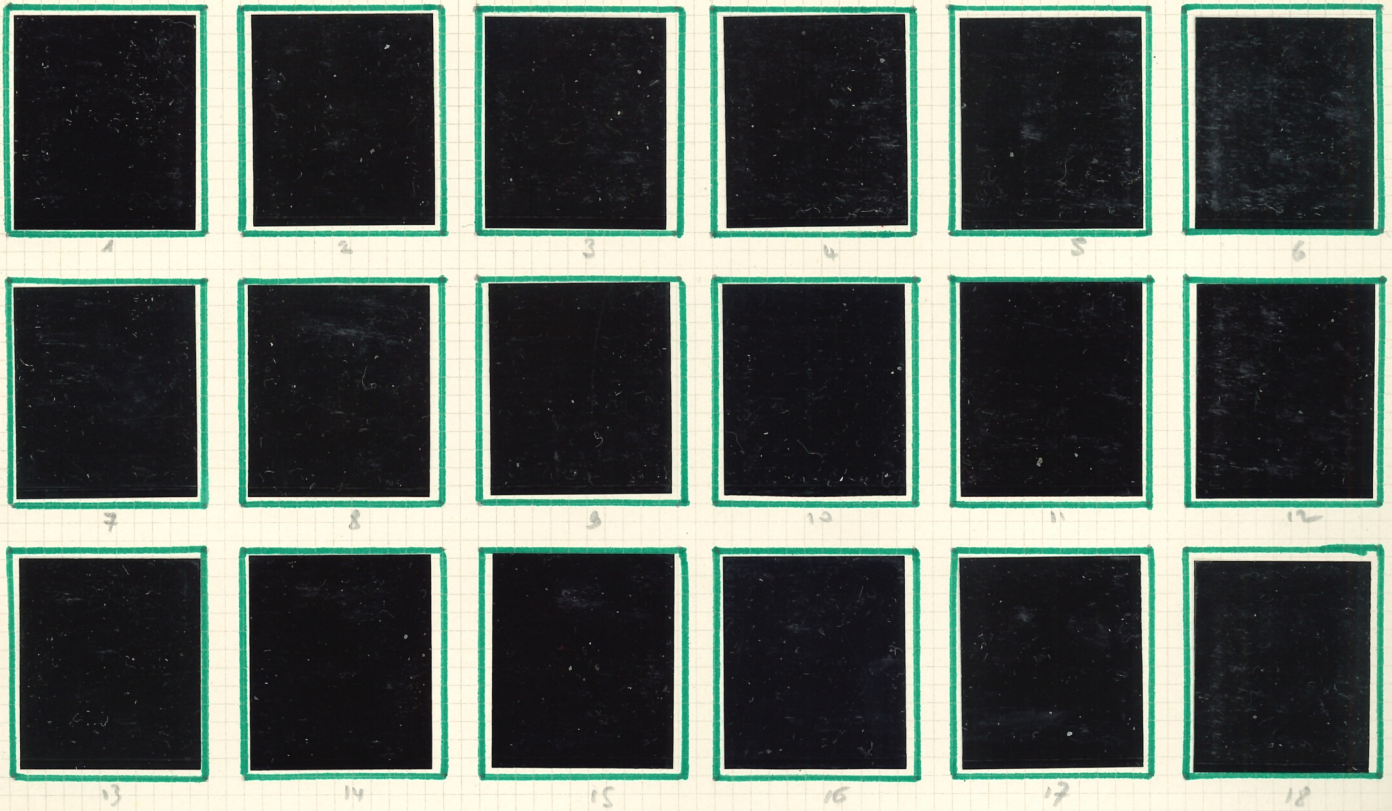


ALEXANDRIE

1899-1900. Timbres de France de 1876-98 surchargés ALEXANDRIE.



1902-03. Typographies.



27a 29a

25a

34

27a

27a

41a



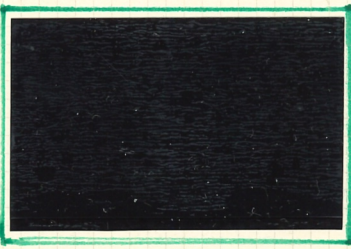
45



46



47



48



49



50

(II - Surclanages de Paris)



50A



51



52



52A



53



54



55



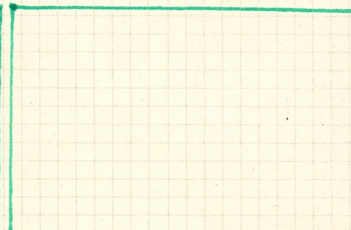
56



57



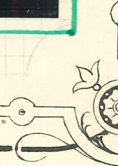
58



59



60



40a

41a

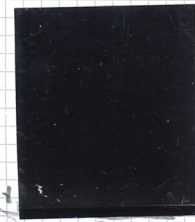
42a



na

nb

-5) Rue Blanc, Marché, Merson.



36a

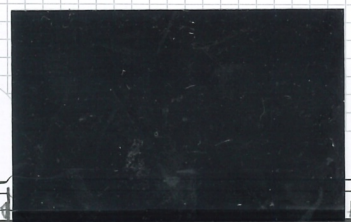


36b



40a

Boussan



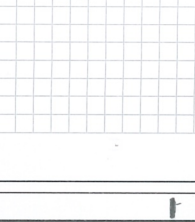
41a



42a



42b



43a



44a



1921-23 - Idem.



61



63



62

1925. Idem surchargés



64



65



65A



66



67



68



69



70



71



a



72



73



74

1927-28. Valeur en millimes



75



76



77



78



79



80

1927-28. Caisse d'Amortissement.



81



82



83



84

TAXE - 1922. Timbres de France de 1893 surchargés.



1



2



3



4



5

1928-30. Valeur en millièmes



6



7



8



9



10



11



12



13



3a

C.E.

Cachets à date sur ~~81123~~ : Timbres du LEVANT



82