

National Wildlife Federation's 1982 Conservation Stamps

America's leading citizens' conservation group for almost 50 years, the Federation works to protect wildlife, and the habitat so vital for its survival. As you use these Stamps on letters and packages, you're showing your personal concern for our country's valuable resources.

Copyright © 1982, National Wildlife Federation
1412 16th St., N.W., Washington, D.C. 20036

Start a Wildlife Stamp Collection
Order a beautiful Album filled with fantastic facts about each of the 36 animals and plants shown in the nature portraits below. These unique Albums (each comes with a complimentary sheet of Stamps) are fun to collect. They provide a valuable wildlife reference for the whole family. They're only \$2.50 each. Collect these Wildlife Stamps each year. Start today!



America's Wild Treasures

Please send me _____ 1982 Conservation Stamp Albums at \$2.50 each. (A complimentary sheet of Stamps will be included in each Album.)
07825AU
120900

Total \$ _____

Name _____

Address _____

City _____

State _____ Zip _____

Send to: National Wildlife Federation
1412 16th St., N.W., Washington, D.C. 20036



BAIRD EAGLE

WILDLIFE HABITAT NEEDS YOUR SUPPORT

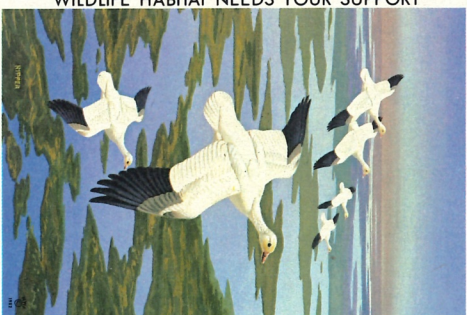
CONSERVE OUR WILDLIFE RESOURCES



FLAME AZALEA

WILDLIFE HABITAT NEEDS YOUR SUPPORT

CONSERVE OUR WILDLIFE RESOURCES



SNOW GOOSE

WILDLIFE HABITAT NEEDS YOUR SUPPORT

CONSERVE OUR WILDLIFE RESOURCES



MULE DEER

WILDLIFE HABITAT NEEDS YOUR SUPPORT

CONSERVE OUR WILDLIFE RESOURCES



MAGNOLIA WARBLER

CONSERVE WILDLIFE

BE A CONSERVATIONIST



BUMBLEBEE

CONSERVE WILDLIFE

BE A CONSERVATIONIST



PEARY EYE

CONSERVE WILDLIFE

BE A CONSERVATIONIST



BROWN-CAPPED ROSY FINCH

CONSERVE WILDLIFE

BE A CONSERVATIONIST



SOUTHERN FLYING SQUIRREL

CONSERVE WILDLIFE

BE A CONSERVATIONIST



BROWN THRASHER

CONSERVE WILDLIFE

BE A CONSERVATIONIST



WESTERN GULL

CONSERVE WILDLIFE

BE A CONSERVATIONIST



BANDED FLORIDA TREE SNAIL

CONSERVE WILDLIFE

BE A CONSERVATIONIST



CAROLINA PARAKEET

WILDLIFE HABITAT NEEDS YOUR SUPPORT

CONSERVE OUR WILDLIFE RESOURCES



RED OAK

WILDLIFE HABITAT NEEDS YOUR SUPPORT

CONSERVE OUR WILDLIFE RESOURCES



RACCOON

WILDLIFE HABITAT NEEDS YOUR SUPPORT

CONSERVE OUR WILDLIFE RESOURCES



COMMON BOBWHITE

WILDLIFE HABITAT NEEDS YOUR SUPPORT

CONSERVE OUR WILDLIFE RESOURCES



GREEN RUSSULA

CONSERVE WILDLIFE

BE A CONSERVATIONIST



MANGROVE CUCKOO

CONSERVE WILDLIFE

BE A CONSERVATIONIST



SPOTTED SALAMANDER

CONSERVE WILDLIFE

BE A CONSERVATIONIST



YELLOW PERCH

CONSERVE WILDLIFE

BE A CONSERVATIONIST



SANDERLING

CONSERVE WILDLIFE

BE A CONSERVATIONIST



PINK LADY'S SLIPPER

CONSERVE WILDLIFE

BE A CONSERVATIONIST



MCCOWN'S LONGSPUR

CONSERVE WILDLIFE

BE A CONSERVATIONIST



CHRISTMAS FERN

CONSERVE WILDLIFE

BE A CONSERVATIONIST



WILDLIFE HABITAT NEEDS YOUR SUPPORT

CONSERVE OUR WILDLIFE RESOURCES



WILDLIFE HABITAT NEEDS YOUR SUPPORT

CONSERVE OUR WILDLIFE RESOURCES



WILDLIFE HABITAT NEEDS YOUR SUPPORT

CONSERVE OUR WILDLIFE RESOURCES

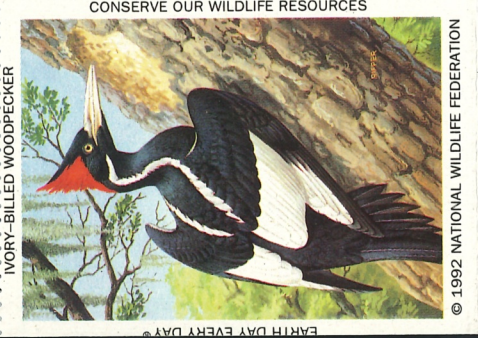


WILDLIFE HABITAT NEEDS YOUR SUPPORT

CONSERVE OUR WILDLIFE RESOURCES

Washington, D.C. 20036-2266
 NWF is a nonprofit, nongovernmental
 conservation organization, tax exempt
 under section 501 (c) (3) IRC.
 Contributions are tax-deductible for those
 who itemize their deductions.

They add wildlife's beauty and wonder to every letter,
 -you send... and help spread the word about conservation in America.
WILDLIFE STAMPS - AN AMERICAN TRADITION SINCE 1938
 Working for the Nature of Tomorrow
 NATIONAL WILDLIFE FEDERATION, 1400 Sixteenth Street, N.W., Washington D.C., 20036-2266
 Note: You are under no obligation to pay for or donate in response to receiving these Stamps - but your contribution is important to us.



IVORY-BILLED WOODPECKER
 © 1992 NATIONAL WILDLIFE FEDERATION



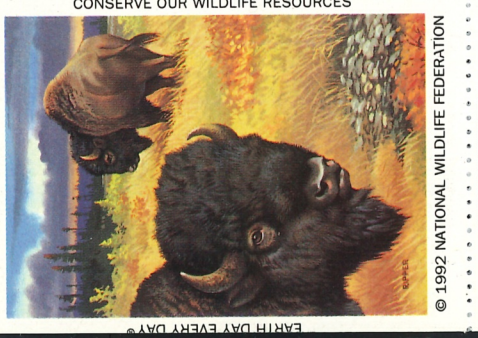
GREEN SEA TURTLE
 © 1992 NATIONAL WILDLIFE FEDERATION



MARGAY
 © 1992 NATIONAL WILDLIFE FEDERATION



BOWHEAD WHALE
 © 1992 NATIONAL WILDLIFE FEDERATION



WOOD BISON
 © 1992 NATIONAL WILDLIFE FEDERATION



TEXAS POPPY-MALLOW
 © 1992 NATIONAL WILDLIFE FEDERATION



SALT MARSH HARVEST MOUSE
 © 1992 NATIONAL WILDLIFE FEDERATION



COLUMBIAN WHITE-TAILED DEER
 © 1992 NATIONAL WILDLIFE FEDERATION



HAWAIIAN GOOSE
 © 1992 NATIONAL WILDLIFE FEDERATION



LOWER KEYS RABBIT
 © 1992 NATIONAL WILDLIFE FEDERATION



AMERICAN BURYING BEETLE
 © 1992 NATIONAL WILDLIFE FEDERATION



PEREGRINE FALCON
 © 1992 NATIONAL WILDLIFE FEDERATION



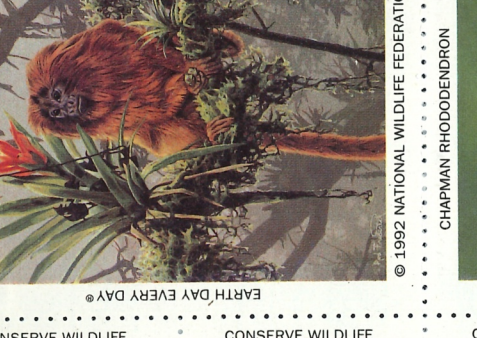
RESPLENDENT QUETZAL
 © 1992 NATIONAL WILDLIFE FEDERATION



NORTHERN SWIFT FOX
 © 1992 NATIONAL WILDLIFE FEDERATION



NELLIE CORY CACTUS
 © 1992 NATIONAL WILDLIFE FEDERATION



GOLDEN-RUMPED TAMARIN
 © 1992 NATIONAL WILDLIFE FEDERATION



HOMERUS SWALLOWTAIL BUTTERFLY
 © 1992 NATIONAL WILDLIFE FEDERATION



WYOMING TOAD
 © 1992 NATIONAL WILDLIFE FEDERATION



MASKED BOBWHITE
 © 1992 NATIONAL WILDLIFE FEDERATION



CHAPMAN RHODODENDRON
 © 1992 NATIONAL WILDLIFE FEDERATION



WEST INDIAN MANATEE
 © 1992 NATIONAL WILDLIFE FEDERATION



OZARK BIG-EARED BAT
 © 1992 NATIONAL WILDLIFE FEDERATION



ROSEATE TERN
 © 1992 NATIONAL WILDLIFE FEDERATION



ST. VINCENT PARROT
 © 1992 NATIONAL WILDLIFE FEDERATION



HAWAIIAN STILT
 © 1992 NATIONAL WILDLIFE FEDERATION



TEXAS BLIND SALAMANDER
 © 1992 NATIONAL WILDLIFE FEDERATION



TEXAS BLIND SALAMANDER
 © 1992 NATIONAL WILDLIFE FEDERATION

These Christmas Stamps do a wonderful job!

These famous stamps bring the beauty and wonder of America's wildlife into the joyous Christmas season, and show the important natural heritage we must all work together to protect. Use these stamps on every card and package you send as a mark of your concern for wildlife, conservation and a healthy environment.

Wildlife Stamps—An American tradition since 1938

Copyright © 1982 National Wildlife Federation, 1412 16th St., N.W., Washington, D.C. 20039
 America's leading citizens' conservation group. Your contribution is important to us.





CHRISTMAS STAMPS WILDLIFE

E5901

Your
Contribution
is
Very
Important

Nature's Gift
To You

Copyright 1979 National Wildlife Federation 1412 16th St. N.W., Washington, D.C. 20036



 BLACKBURNIAN WARBLER	 WHITE-TAIL DEER	 WHITE-WINGED CROSSBILL	 WHISTLING SWANS	 CANADA LYNX	 CARDINAL
 CANADA LYNX	 CARDINAL	 BLACKBURNIAN WARBLER	 WHITE-TAIL DEER	 WHITE-WINGED CROSSBILL	 WHISTLING SWANS
 WHITE-WINGED CROSSBILL	 WHISTLING SWANS	 CANADA LYNX	 CARDINAL	 BLACKBURNIAN WARBLER	 WHITE-TAIL DEER
 BLACKBURNIAN WARBLER	 WHITE-TAIL DEER	 WHITE-WINGED CROSSBILL	 WHISTLING SWANS	 CANADA LYNX	 CARDINAL
 CANADA LYNX	 CARDINAL	 BLACKBURNIAN WARBLER	 WHITE-TAIL DEER	 WHITE-WINGED CROSSBILL	 WHISTLING SWANS
 WHITE-WINGED CROSSBILL	 WHISTLING SWANS	 CANADA LYNX	 CARDINAL	 BLACKBURNIAN WARBLER	 WHITE-TAIL DEER

UNICORN TAPESTRY, FRANCO-FLEMISH, ABOUT 1515

 Sandhill Crane	 Northern Oriole	 Peregrine Falcon	 Harlequin Duck
 Sandhill Crane	 Northern Oriole	 Peregrine Falcon	 Harlequin Duck
 Sandhill Crane	 Northern Oriole	 Peregrine Falcon	 Harlequin Duck
 Sandhill Crane	 Northern Oriole	 Peregrine Falcon	 Harlequin Duck
 Sandhill Crane	 Northern Oriole	 Peregrine Falcon	 Harlequin Duck
 Sandhill Crane	 Northern Oriole	 Peregrine Falcon	 Harlequin Duck

CHRISTMAS STAMPS WILDLIFE '78

YOUR CONTRIBUTION IS VERY IMPORTANT



Nature's Gift To You

E5801



© Copyright 1978 National Wildlife Federation 1412 16th St. N.W., Washington, D.C. 20036

 RED FOX	 BLACK-CAPPED CHICKADEE	 MALLARD	 FOX SQUIRREL	 CARDINAL	 DALL SHEEP
 CARDINAL	 DALL SHEEP	 RED FOX	 BLACK-CAPPED CHICKADEE	 MALLARD	 FOX SQUIRREL
 MALLARD	 FOX SQUIRREL	 CARDINAL	 DALL SHEEP	 RED FOX	 BLACK-CAPPED CHICKADEE
 RED FOX	 BLACK-CAPPED CHICKADEE	 MALLARD	 FOX SQUIRREL	 CARDINAL	 DALL SHEEP
 CARDINAL	 DALL SHEEP	 RED FOX	 BLACK-CAPPED CHICKADEE	 MALLARD	 FOX SQUIRREL
 MALLARD	 FOX SQUIRREL	 CARDINAL	 DALL SHEEP	 RED FOX	 BLACK-CAPPED CHICKADEE

 BOYS TOWN NEBRASKA	 BOYS TOWN NEBRASKA	 BOYS TOWN NEBRASKA	 BOYS TOWN NEBRASKA	 BOYS TOWN NEBRASKA
 BOYS TOWN NEBRASKA	 BOYS TOWN NEBRASKA	 BOYS TOWN NEBRASKA	 BOYS TOWN NEBRASKA	 BOYS TOWN NEBRASKA
 BOYS TOWN NEBRASKA	 BOYS TOWN NEBRASKA	 BOYS TOWN NEBRASKA	 BOYS TOWN NEBRASKA	 BOYS TOWN NEBRASKA
 BOYS TOWN NEBRASKA	 BOYS TOWN NEBRASKA	 BOYS TOWN NEBRASKA	 BOYS TOWN NEBRASKA	 BOYS TOWN NEBRASKA
 BOYS TOWN NEBRASKA	 BOYS TOWN NEBRASKA	 BOYS TOWN NEBRASKA	 BOYS TOWN NEBRASKA	 BOYS TOWN NEBRASKA

CHRISTMAS STAMPS WILDLIFE '77

YOUR CONTRIBUTION IS VERY IMPORTANT



Nature's Gift To You

E5701



© Copyright 1977 National Wildlife Federation 1412 16th St. N.W., Washington, D.C. 20036



Christmas Stamps ~ Wildlife '76

E560



YOUR CONTRIBUTION IS VERY IMPORTANT

Nature's Gift To You



The World's Largest Non-Profit, Non-Governmental Conservation Organization

National Wildlife Federation, 1412 16th St. N.W., Washington, D. C. 20036





YOUR CONTRIBUTION IS VERY IMPORTANT



Christmas Stamps Wildlife '75

National Wildlife Federation
1412 16th St. N.W., Washington, D. C. 20036



"The World's Largest, Non-Profit, Non-Governmental Conservation Organization"

E5501

 EVENING GROSBEEK	 RED CROSSBILL	 SAW-WHET OWL	 PURPLE FINCH	 BLACK-CAPPED CHICKADEES	 CARDINAL
 PURPLE FINCH	 BLACK-CAPPED CHICKADEES	 CARDINAL	 EVENING GROSBEEK	 RED CROSSBILL	 SAW-WHET OWL
 EVENING GROSBEEK	 RED CROSSBILL	 SAW-WHET OWL	 PURPLE FINCH	 BLACK-CAPPED CHICKADEES	 CARDINAL
 PURPLE FINCH	 BLACK-CAPPED CHICKADEES	 CARDINAL	 EVENING GROSBEEK	 RED CROSSBILL	 SAW-WHET OWL
 EVENING GROSBEEK	 RED CROSSBILL	 SAW-WHET OWL	 PURPLE FINCH	 BLACK-CAPPED CHICKADEES	 CARDINAL
 PURPLE FINCH	 BLACK-CAPPED CHICKADEES	 CARDINAL	 EVENING GROSBEEK	 RED CROSSBILL	 SAW-WHET OWL
 EVENING GROSBEEK	 RED CROSSBILL	 SAW-WHET OWL	 PURPLE FINCH	 BLACK-CAPPED CHICKADEES	 CARDINAL
 PURPLE FINCH	 BLACK-CAPPED CHICKADEES	 CARDINAL	 EVENING GROSBEEK	 RED CROSSBILL	 SAW-WHET OWL
 EVENING GROSBEEK	 RED CROSSBILL	 SAW-WHET OWL	 PURPLE FINCH	 BLACK-CAPPED CHICKADEES	 CARDINAL
 PURPLE FINCH	 BLACK-CAPPED CHICKADEES	 CARDINAL	 EVENING GROSBEEK	 RED CROSSBILL	 SAW-WHET OWL

Your Contribution is Very Important



© 1981 NWF



Nature's Gift to You

WILDLIFE STAMPS for CHRISTMAS

Use on all your Christmas letters and packages to show you care.
National Wildlife Federation 1412 16th St., N.W., Washington, D.C. 20036

E5101

 RACCOON	 CARDINAL	 TRUMPETER SWAN	 POLAR BEAR	 CARDINAL	 EVENING GROSBEEK
 CARDINAL	 EVENING GROSBEEK	 RACCOON	 CARDINAL	 TRUMPETER SWAN	 POLAR BEAR
 TRUMPETER SWAN	 POLAR BEAR	 CARDINAL	 EVENING GROSBEEK	 RACCOON	 CARDINAL
 RACCOON	 CARDINAL	 TRUMPETER SWAN	 POLAR BEAR	 CARDINAL	 EVENING GROSBEEK
 CARDINAL	 EVENING GROSBEEK	 RACCOON	 CARDINAL	 TRUMPETER SWAN	 POLAR BEAR
 TRUMPETER SWAN	 POLAR BEAR	 CARDINAL	 EVENING GROSBEEK	 RACCOON	 CARDINAL
 RACCOON	 CARDINAL	 TRUMPETER SWAN	 POLAR BEAR	 CARDINAL	 EVENING GROSBEEK
 CARDINAL	 EVENING GROSBEEK	 RACCOON	 CARDINAL	 TRUMPETER SWAN	 POLAR BEAR
 TRUMPETER SWAN	 POLAR BEAR	 CARDINAL	 EVENING GROSBEEK	 RACCOON	 CARDINAL
 CARDINAL	 EVENING GROSBEEK	 RACCOON	 CARDINAL	 TRUMPETER SWAN	 POLAR BEAR

SAVE AMERICA'S WETLANDS

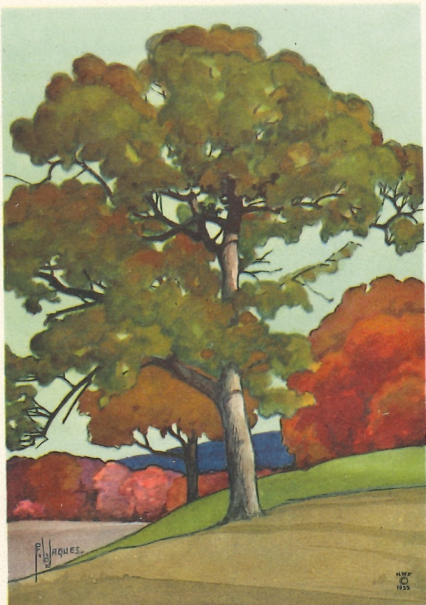
The National Wildlife Federation is stressing the importance of wetlands—marshes, swamps, bayous and lakes—during 1955. It is the theme for National Wildlife Week March 20-26. Of some 120 million acres of original marshland in the United States, drainage and pollution have destroyed all but 30 million. Threatened are invaluable wildlife and fisheries resources, including many rare species. Some drainage projects are necessary, but some are unwise.

National Wildlife Federation, Washington, D. C.

National Wildlife

1955

Copyrighted and published by the National Wildlife Federation, Washington, D. C.
The Conservation of Our Soil, Forests, Waters and Wildlife



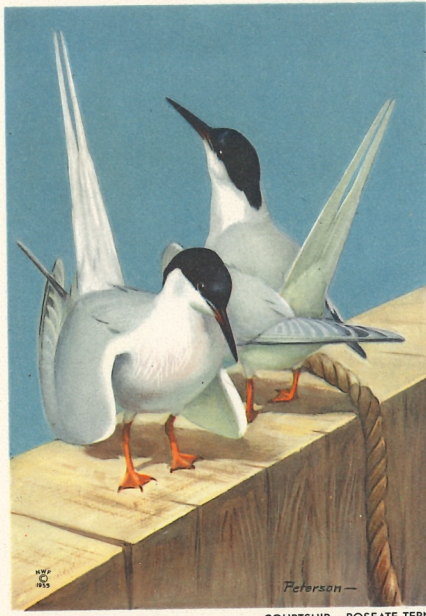
© 1955 National Wildlife Federation, Washington, D.C.

BURR OAK



© 1955 National Wildlife Federation, Washington, D.C.

NEWFOUNDLAND CARIBOU



© 1955 National Wildlife Federation, Washington, D.C.

COURTSHIP—ROSEATE TERN



© 1955 National Wildlife Federation, Washington, D.C.

BEAVER



© 1955 National Wildlife Federation, Washington, D.C.

YELLOW BASS



© 1955 National Wildlife Federation, Washington, D.C.

WILD SUNFLOWER



© 1955 National Wildlife Federation, Washington, D.C.

CRESTED FLYCATCHER



© 1955 National Wildlife Federation, Washington, D.C.

SEA PINK



© 1955 National Wildlife Federation, Washington, D.C.

CLAPPER RAIL



FATHER FLANAGAN'S BOYS' HOME, BOYS TOWN, NEBRASKA. FOR HOMELESS, ABANDONED BOYS REGARDLESS OF RACE OR CREED.
1954 ANNUAL SEAL.

OUR PUBLIC LAND RESOURCES

The National Wildlife Federation will direct its educational program during 1958 toward making all Americans aware of their stake in the public lands. These include National Forests and Parks, Wildlife Refuges, public grazing lands and others—about 900 million acres all told. They harbor countless wildlife. Their scenic splendor, forests and streams provide recreation for you and your neighbors. Their timber and minerals help keep America strong. The public lands are your property. Only at your insistence will they be wisely used. Your contribution in return for these Conservation Stamps helps the Federation alert others so they may join in protecting our public land resources.

National Wildlife

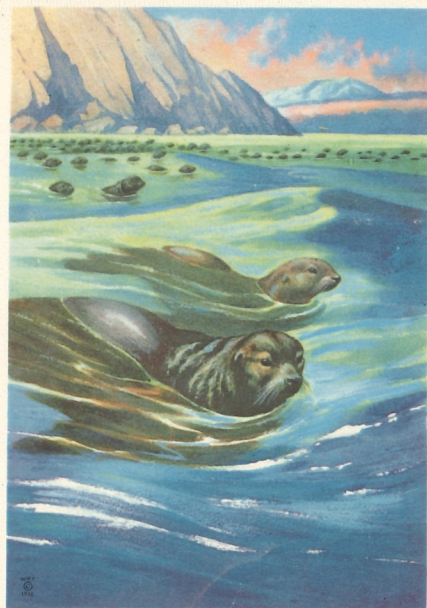
1958

The Conservation of Our Soil, Forests, Waters and Wildlife

COPYRIGHTED AND PUBLISHED BY THE NATIONAL WILDLIFE FEDERATION, WASHINGTON, D.C.



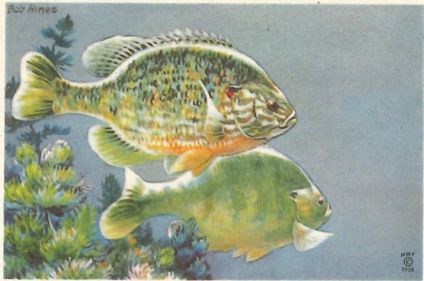
ARCTIC TERN



FUR SEAL



KING SALMON



PUMPKINSEED



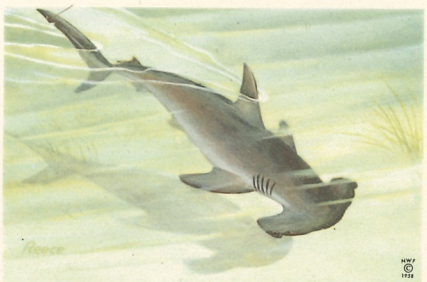
HONEY BEE



WILD ROSE



PYRRHULOXIA



HAMMERHEAD SHARK



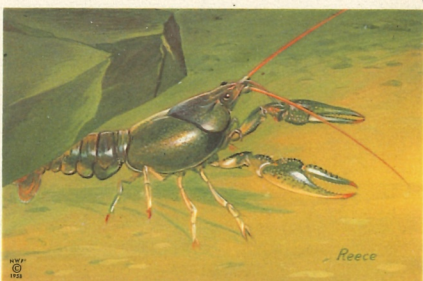
WHITE-HEADED WOODPECKER



ALBACORE



RED-SHOULDERED HAWK



CRAWFISH



CANVASBACK



BLACK SQUIRREL



NARROW BLUE-FLAG

Educational and Decorative · For Stamp Albums, School Work, Souvenir Books, etc. · Gummed and Perforated · Price 25c

88 FLAGS OF THE WORLD

Copyright 1953 by H. E. Harris & Co., Boston 17, Mass. All Rights Reserved. Printed in U.S.A.





All the Lakota Indian boys and girls depend upon your gift and your love. St. Joseph's Indian School Chamberlain, South Dakota.

