

US cote de
valeurs indiquées

Canada
valeurs indiquées



N° 13
TB
C 60



18 TB
C 40 x 2



N° 21
C 125



25 TB
C 160C



31 TB
C15



35 TB
C225e



39
C20



40
C15



42 TB
C30



43 TB
C30



44 TB
C30

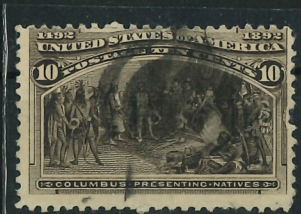


61 TB
C25



66
C22





C20



103
K2
C34



206(B)
dent 10
c: 7



212(B)
dent 10
c: 200.



232
c=80



233
c=35



235
c=50



236
c=15

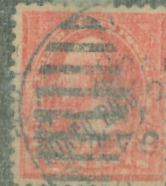




1885. — Express.



1889. — Express.





19
c25



19
c100e



2d4
c600



21
c22,50



31a
50
mt
c200

