

10 CENTIME BLACK ON LILAC

TYPE II

FIVE PRINTINGS WERE MADE BY THE BANQUE DE FRANCE ALL ON PAPER A.

- |                             |            |    |             |
|-----------------------------|------------|----|-------------|
| 1. DECEMBER 1876-MARCH 1877 | SLATE      | ON | PALE LILAC  |
| 2. OCTOBER - DECEMBER 1877  | GRAY SLATE | ON | LIGHT LILAC |
|                             | SLATE      | ON | DULL LILAC  |
| 3. JULY - NOVEMBER 1878     | SLATE      | ON | LILAC       |
| 4. OCTOBER - DECEMBER 1879  | BLACK      | ON | DULL LILAC  |
| 5. FEBRUARY - APRIL 1880    | SLATE      | ON | VIOLET      |

THE FRENCH IMPERFORATE WAS MADE FROM THE 1st PRINTING, AND THE COLONIES WERE MADE FROM THE 2nd, 3rd, AND 4th PRINTING.

STARTING ~~X~~IN 1881 AND EACH YEAR THEREAFTER UNTIL 1900 PRINTINGS WERE DONE AT THE ATELIER DES POSTES. THE VARIETIES OF COLORS ARE NUMEROUS.

TYPE I

PRINTED IN 1898, 1899, and 1900 ON C PAPER.

*I IMPERF ACCIDENTAL*

*II ALSO HAS ACCIDENTALS*



*TYPE II*

*PARIS  
EXPOSITION  
CANCEL  
RAAP  
1900*

*TO BRUSSELS  
BELGIUM*

*EBAY  
3/07  
#7.*

*CATALOG  
35E*



TYPE II

CRLAGE \*



B PAPER



B PAPER

1897 \*



BLACK ON LILAC  
C PAPER

1895 \*



BLACK ON DULL  
SALMON  
B PAPER

\* HINGE  
RENFORCE



XX  
SUPERBE  
SCHUYLER  
RUMSEY  
12/03  
850  
+10%

CAT.  
60E



A PAPERS



B PAPERS



BLUE  
CANCEL

C PAPER



TYPE II

1899 C PAPER



"JERSEY"

BLACK ON VIOLET  
OR " " ROSE  
OR " " LILAC



EBAY #31

1897 C PAPER



REGUM

BLACK ON GRAY  
OR " " SALMON  
OR " " LILAC



PERF ALMOST  
ALL SEPARATELY

\* SOME THINKING



PRE CANCEL



#16  
#16  
Thin



#16



PHILATEL 12/94 412  
XX SAND MILLESIMES



RED

PRE OBLIT #4



4LINES  
SUP.

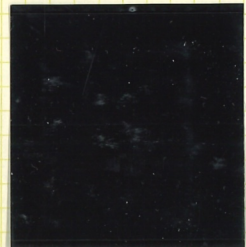
GOMME N/O ?  
EBAY 30E SIBNE



BTD 600  
GOT 40

5 FEVR  
ROUMET 3107  
CAT 2150E  
PAID 1540E

XX RECOVERED TB



PHILATEL  
12/04  
CAT 100E  
PAID 90E

\* CERES 6/03  
CAT 200E  
PAID 190E \*

XX



\*



PETITE  
CDF  
XX  
SUPERBE  
EBAY  
24E

x

x



\* CERES 11/90  
CAT 1100  
BTD 1000  
GOT 647 FR

XX SUPERBE  
WERRANNAU BDT



\* TB



\* CERES  
2/99  
1200 FR



FELDMAN 6106  
CAT 120E PAID 72E  
BTD 78

ALBUM PAGE

SCOTT

AN OFFICIAL



TYPE II  
 #89  
 CDF TB P.R.  
 XX BUT HINGE  
 ON 1 STAMP.  
 LEGERE FROSSISURE  
 CAT 295  
 PAID 14 E  
 CERES  
 12106



#89 TYPE II xx  
 EBAY 3/07  
 CAT 295 E  
 PAID 14 E  
 31 E

TYPE I  
 #103  
 CDF  
 xx TB  
 CERES  
 12106  
 CAT 160  
 PAID 112



TYPE I  
 #103  
 CDF  
 xx TB  
 PAINTAGE  
 CAT 207  
 PAID 55 E



TYPE I  
 #103  
 EBAY 11 E



FRANCE IS LIGHTER WHITE

DIFFICULT TO DISTINGUISH GRANET

BUT ACCIDENTALS EXIST IN TYPE I + II

NOT GRANET

BOUGHT AS COL APPEARS TO BE FRANCE



CBAY 266 XX

TYPE II

IMPERFORATES

\* SUPERBE BEIR 199



60R

MAYBE GRANET

FRANCE

FRANET?



HOLE CRACK

COLONY

SLATE ON PALE LILAC



ERAY LE

TYPE I



see later for imp

XX

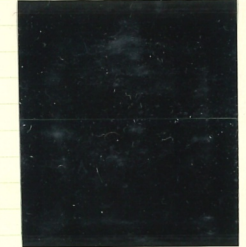
II

74

I

XX

SUPERBE 2X



REVERSED

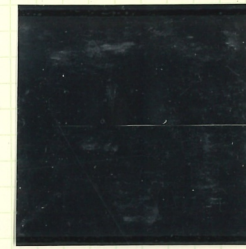
SE TENANTS II + I 898

CBAY 266

\* I



I USED DOUBLE IMPRESSION ATOUT PHIL 7/98 1342 FR.



SIGNED, CAVES



DOUBLE IMPRESSION XX TB CERES 10/15 500E



DOUBLE IMPRESSION CERES 12/00 TB 4

CAT 3204 PAID 1800P

IS THIS DOUBLE OR EXTRA INK??

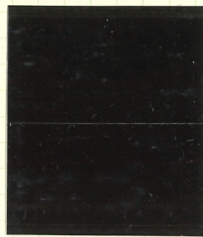
CERTIFICATE SCELLER



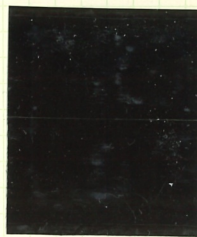
XX TYPE I & II  
LARGE PDK



### REGENTS



ON WHITE



ON COLOR

TYPE I AND II  
SE TENANTS



CANCELLATIONS  
TYPE II



ON LILAC



MILLISIMES  
TYPE I

SEE  
LATER



ON DEEP ROSE



ON LILAC

BLACK ON VIOLET

BLACK ON VIOLET



ON DEEP ROSE



ON LILAC



PERFORATED ESSAY 1900  
 GRAY ON ROSE  
 SEE FRANCE SPECIALIZED ESSAYS  
 BUT HAS CANCELLATION  
 SEE ALSO  
 CERES ESSAYS



SEE 25c SIMILAR CANCELLATION

SOUS-SECRETARIAT D'ETAT DES POSTES

MATERIEL

ET

? O TAT

WORD ON  
 BEHR'S  
 SHOWS  
 "ELECTRIQUE"  
 OR SOMETHING

7/89 TRIP TO  
 PARIS  
 BEHR HAS THIS  
 IN PAIR & ALSO  
 25c  
 SAYS "RARE ESSAY"  
 COLORS OK  
 JOHNS KNOWS ABOUT IT  
 BUT DIDNT INCLUDE  
 IT IN HIS BOOK  
 BEHR SALES PRICE  
 6000 FRANCS  
 BEHR OFFERED  
 ME 4600 FR.  
 BUT CATALOG  
 VALUE IN ESSAY  
 SECTION  
 146 EURUS  
 ??

W PAID  
 \$10

END FB \*

TIMBRE SUR  
 HAVI N/D  
 A GAUCHE  
 ET TIMBRE DU  
 BAS N/D  
 3 COTES  
 CERES. 186

I BEYROUTH

EBAY  
 2



\*

\*

IMPERF TYPE I

← IMPERF IS ACCIDENTAL  
 ONLY OCCURS ON 3 SIDES  
 IN THIS MANNER OR ON TOP  
 ↓



TYPE I  
 ALL IMPERF  
 POSSIBLY  
 PERFS CUT  
 OFF ON 1  
 OR 2 SIDES

TYPE 5



↑ RECIO VERSO  
 PAIRE  
 CREASE

IMP  
 TYPE I  
 ON TOP  
 CERES  
 CAT  
 PAID  
 SEE  
 LATER  
 FOR  
 ANOTHER

2199  
 1990  
 945 F



mmmm

UNUSUAL TYPE I 103

IMPERF 2 SIDES + PART OF 3RD SIDE



*Impression*

CARTE POSTALE

Ce côté est exclusivement réservé à l'adresse.

Mademoiselle M. Gallo

Niols

CP 50ms Bande

4812093941

DATED 1901

EBAY #37 WORTH MORE !!!

L LISTING MARRY DENTALE 1 OR 3 SIDES NO LISTING FOR EBLYX

TYPE I XX TB

TYPE II #89

CPF XX PERF 3 SIDES + YTB

TYPE II #89 XX SUPERB BBE



EBAY 21E CAT NOE



NOT LISTED IN CATALOG PERFS OK DESIGN OK PAPER OK



EBAY

II EXPO UNIV. 1889



BEAUFOND 2672

EBAY 131E RARE 5/10



II KB-... xx



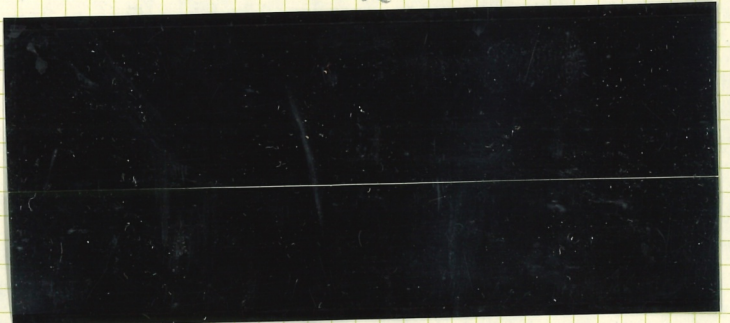
EBAY MURRY 70E  
CAT M3 PAIRE MILL 9  
+ 120 PAIRK  
295  
= 300

CDP FB+ I xx HANGEMARKS ON MARGINS ONLY



EBAY  
16E  
CAT.  
200E

II xx TB



II SPECIMEN  
PATON BAS  
NATURAL BEND VERSED  
FB CAT 650  
EBAY # 86.!!!



EBAY

DEFECT

SPECTACULAR PIQUAGES EBAY 76E



17x3

BENFOND #3081

II DOUBLE PIQUAGE OBLIQUE CDP \* PARTS OF 5 STAMPS



I

FB x HROZINSKI  
2/13 120E

I



(1)



JAMET 10/11 294E

BENFOND #1465



PARTIAL RECTO VERSO  
XX II X FULL



EBAY 78E

XX SUP. CDF TYPE I 103 D  
MIUE O



ROUMET 10/13 CAT. 400E  
SEE EARLIER PAID 160E  
FOR ANOTHER

TYPE II 49 TB



SOUTHAMPTON  
ON PIECE  
BEAUFOND 2894

EBAY  
15E

II TB TAMPON  
FACTEUR



BEAUFOND 3015  
EBAY 7E

TB I EBAY 11E



DECKE II



TB EBAY 27E

I TB O



FADMAN  
12/13  
129E

VERTICAL  
N/D  
NO  
MILIEU

II ONE STAMP THIN REST TB



EBAY  
24E

II AR RARE



BEAUFOND 3035  
EBAY 39E



BERGER-LEVRANT  
NOT NANCY

PERLIN  
MINOR  
DEFECTS  
SIX PAYS  
EBAY  
81

II TB (X)



EBAY 26E



SANS  
TEINTE  
EN BAS  
EBAY  
2E



EBAY 51

BRISOL  
BLACKON  
LILAS  
II  
SIGNATURE  
POUR  
ESSAY 8846  
SEE JAWY  
P 156



BEAUFOND  
2405  
LONDON  
TB  
EBAY 9E

II



EBAY 20E 2 XX 2X TB

II TB



(9)  
5  
BEAUFOND  
3015



II MONTE CARLO  
TB LON 26 TB LON 26



BEAUFOND  
2889a  
MENT M  
MARSEILLE A MONT



BEAUFOND  
2885 OR 2886a  
(?)

II EBAY 16E 0



I XX CDF TB DEPART D'IMPRESSON



PASCAL MROZINSKI 1/17 400E

TB  
SEE  
REAR  
PARIAL  
PRINTING

I BOMBAY (RARE)



PASCAL 90E TB  
BEAUFOND 2918

II REFUSEME



PASCAL 40E

II CRETE TB SIGNE CALVES



PASCAL 75E

II TB EBAY 13E



IMPRESSON  
PARCIELLE  
DE LA TENUE  
DE FOND

I TB BEAUFOND 2950



AMBULANT SUISSE  
EBAY 17E

II TB



BEAUFOND 2979  
ROUGE AFFRANCH.  
INRUPISANT  
PASCAL 30E

I TB BLEU CANCEL

PASCAL M. 14E



I \* ROUMET 16E I PARIS DEPART N



PLI ACCORDEON  
ET REPUBLIC DOUBLEE



BEAUFOND 18  
II TB

RETIRE  
N  
ROMAIN  
EN  
LEURS  
TB  
EBAY  
3E

SOUS SECRETARIAT  
D'ETAT DES POSTES  
ET TELEGRAPHICS/  
MATERIELS/  
EXPLOITATION/ELECTRIQUE



NOIR SUR BISTRE TB

ESSAY II (4)

SITA  
CRETE  
RARE  
EBAY  
H/O





I  
10  
EBA  
182



I 103 XX  
MILLE 9 TB  
ROUMET 1008  
918

MARIONNE  
DENUNDO 262



SVR  
CARTON  
TB

BUNDS NYERS - BORDAU  
LS2 EBA 7E



- MVEL 2 SANS  
TEINTE

IMPERE 2  
ISIDE

PERES

II  
EBA  
CASCAL  
24E



I 103 G XX  
SUPERBE  
BDF  
ROUMET 544  
544  
928  
RRR



FOND VERDATRE 2  
FRUITS



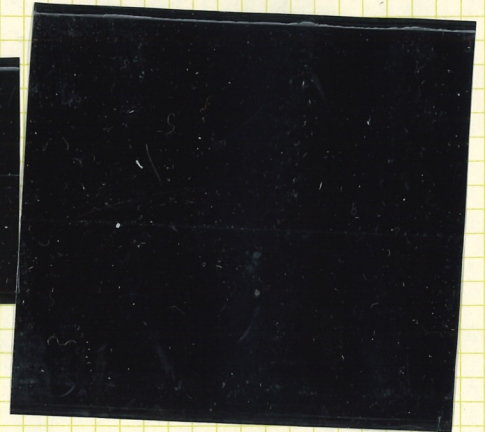
I TB  
EBA 7E

I



89 (x)° Essai Bloc de 4 ND avec Gd cachet de Sce Matériel et Exploitation Postes et Télégraphes TB

II LUGDUNVA 56 + 28 67E sup xx



SCE Block of 5

I XX TB EBAY \$102 (84E)

TEINTE I CERES 122E



LUGDUNVA 169 + 28 217E

SEYENANT TB

I ODF TB CARY TE



II

EBAY 30E

I

I TB \*

I. TB ORDINANCE 17 NOV 1944



EBAY 5E



TB