

SE

TYPE II D

PAPER - AVERAGE THICKNESS



CACHÉ D'ESSAI
CARRÉ DE POINTS

PAPER - THIN



PHILATEL
2107
50E
BEAUFOND
56

TYPE II E

PAPER - THICK



PAPER - THIN



NUMEROS
DE
FACTEURS
 $\frac{4}{?}$
EBAY #2
BEAUFOND
3015

VARIETIES - OUIER MARGIN



MARGIN
EXTRA THICK



MARGIN
EXTRA THIN

SEE
OTHERS
NEXT PAGE

VARIETIES - TRIANGLE

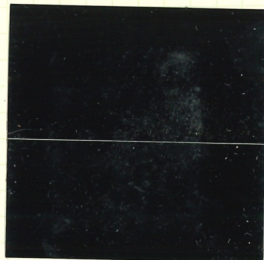


PARTIALLY
STRIATED
(RATHER FULLY)
THICK MARGIN



PARTIALLY
STRIATED
THICK MARGIN

1893



PRE OBLIT #17
12/96 DEMAREST
10 CAT 5000
810 750

GUT 6163

ENLARGED LIGHT LINE UNDER POSTE

THIN
MARGIN



THIN
MARGIN

THICK
LEFT MARGIN
BLUE
CANCEL



THICK
LEFT MARGIN

TRIANGLE - PARTIALLY
STRIATED
NARROW MARGINS



DORÉ ?

LINES

SEE 6
OTHER
ONE

SE (CONTINUED)

TYPE II D

CANCELLATIONS



TYPE II E

CANCELLATION



THIN
LEFT BORDER

THIN LEFT BORDER

THIN LEFT BORDER

DATED BEFORE JUNE 99 THEREFORE
CANNOT BE TYPE II G

1893



1894



1895



CANCEL



Piq A CHÉVAL

RECTO VERSO

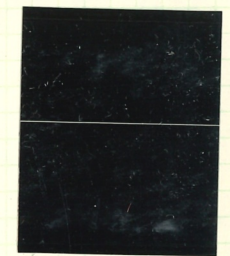


FACE
OUTLINE
INCOMPLETE
(BY LIGHT
LINE)



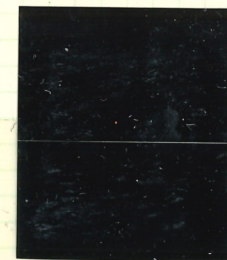
ENLARGED
LIGHT LINE ?

THIN BORDER (X)



THIN
PAPER

IID



DOUBLE

PERF FRANK

ACCIDENTAL IMPERF
SIGNED CALVES

SE

TYPE II D

PAPER - AVERAGE THICKNESS



← THINNER BORDERS

PAPER - THIN



TYPE II E

PAPER - THICK

PLATE POSITION #16



PLATE POSITION 6-8 OR 16-19



PAPER - THIN



? ENLARGED LIGHT LINE UNDER POSTE

VARIETY

DATED 1899 PROBABLY 'E'



PROBABLY 'D'

TRIANGLE PARTIALLY STRIATED

D O R E ?



ENLARGED LIGHT LINE

SE

SE

SE



EBAY SE



XX FORUM SEPT 97 CAT 270

PAID 230

SE

TYPE II D

PAPER - AVERAGE THICKNESS



CACHET DE FACEDR



EBAY FR 10E

PAPER - THIN



THIN BORDER

TYPE II E

PAPER - THICK



PAPER THIN



THICK BORDER ?

ENLARGED LIGHT LINE



Recio

VARIETY

LOOKS LIKE 1893 OR 1897



ENLARGED LIGHT LINE ?

PRE-OBLIT #17 TB



ROUYER 2195 CAT 9500 B.D. 9100 GOT 7146

TRIANGLE - PARTIALLY STRIATED

DIFFICULT TO DISTINGUISH FROM TYPE II G

111

SE

VARIETY

ALL SE

x



x D O R E ?

PROBABLY E

**

** PAPER IS THICK
WHITE BACKGROUND IS MORE WHITE

TRIANGLE - PARTIALLY STRIATED

TYPE II E SE
CDF ** TB

ROUSET
605
CAT 91
PAID 52



PLATE POSITION

31, 32

41, 42

SE

TYPE II D - TRIANGLE IS OFTEN POORLY PRINTED

TYPE II E

PAPER AVERAGE THICKNESS



SEPT 1892

PAPER - THICK



NOTE DIFFERENCE IN THICKNESS OF OUTER FRAME LINE



PAPER - THIN



PAPER - THIN



12/91
DE HARLES
CAT 104
PAID 483
SIGNED
BROWN

CANCELLATIONS



ENLARGED LIGHT LINE UNDER POSTE ?



II D



BLUE CANCEL

SE
GALVANO FAULT

NOT CLEAR BECAUSE OF CANCELLATION



II E



✓ NO RECORD OF THIS VARIETY EXISTS ✓

MAY REALLY BE SE

SE
GALVANO FAULT

TYPE II D

PLATE POSITION 1 OR 30



EBAY 15c

BLEU
1894

TYPE II E



IMPERF.



← SE GALVANO FAULT ACCIDENTAL IMPERF.
PLATE POSITION #1
SIBWA BRUN

← SE Ⓣ

← SE Ⓣ

POSITIONS
OK

CAT. MAURY
300x2 600
200x1 200

2 1 COF
XX X Piquage oblique
CROSS LIST 191E

TYPE II G

ONLY THICK PAPER

PRINTED
1899-1900

VERY LIGHT OR ALMOST NO TRACE
OF SHADOW IN 'S'

RECS VERSO



SEPT 99



NOV 99



SEPT 99



1900



1900



1901



OCT 99



22 JULY 99



DEC 99



17
JUNE
99



27
JUNE
99

II G REPORTED TO BE FIRST USED
JULY 1899 NOTE ABOVE 2 DATES

15
THIS
G 2

TYPE II D

STE

x

STB

QUADRILLE

TYPE II E

x

TYPE II G

xx



xx

x

xx

STAINS IN REAR



WLD CERES 6/99 xx 13
CAT 2500 + PAID 1260FR

THIS IS
WORTH
MORE

SEE
FEW PAGES
BEFORE
ANOTHER
PAIR
TYPE II G

x

ANNULÉ II D SE

EBAY
66

BEAUFOND
1215

CAISSE D'ÉPARGNE
BAUQUE

QUADRILLE

TYPE II E

II D

II D

BLEMISH



SE

SE

PLATE POSITIONS

#35

xx

#36

II D



SE

SE

#11

#16



SE

SE

49

50

II D xx

II D xx



SE

SE

15



38

SE

15



1

15



xx



xx

x



xx

QUADRILLE

II E

PARTIAL
RECTO VERSO
UPPER LEFT

X

SE

XX

SE

Position 12
11, 12

II E OR G

PARTIAL
IMPERF



THICK PAPER

II D ? X



II G

NO GUM

SE

SE OR SE

PL. Pos. 3
OR 38

4 ?
39

II D X



SE

SE

15

16

II E



SE

SE



9

X

XX

SOWN BY
HINBE X



XX

SOWN BY
HINBE

XX

XX



XX

XX



XX

X

XX



TYPE E
PLACE POSITION 15+16
RECTO VERSO SE SE
XX

SANS MILLESIME

STE



2 XX
2 x
ROUMET
1010
CAT 464E
PAID 189E

STE

STE



STE

IB S6NE

ALLU

II D SE BLUE CANCEL TB



EBA/WE

FAULT



CÉRES
1010
101E

15 RECVRSO XX + INATURAL BDF

VARIÉTÉ DE VERNIS
IMPRESSION DEPOUILLEE

DOUBLE PIQUAGE
REINFORCED RIGHT VERTICAL
PERF MARGIN
CDF

EBA/89E

x4
xx-1
DOUBLE PIQUAGE
EN BAS SUP
CDF JAMES 17E
411

EBA/SE

BEA/KM
412/R

GALVANO
FAULT



SE

GALVANO
FAULT

NSO 1010E

PLATE POSITION TYPE II D QUADRILLE
BY TYPES

3. SE
4. SE

1. SE
2. SE

SEZ
INDIV
511/MP

GALVANO
FAULT

SE

SE



GALVANO
FAULT

GALVANO
FAULT

ON THE ID
THIS IS
SE (GROUND FAULT)

PLATE POSITION TYPE IIE QUADRILLE

1) SE
2) SE
3) SE
4) SE



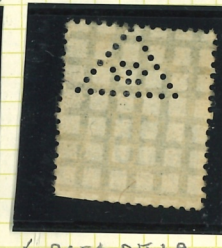
EBAY 19E
PARIS
RR PROVINCE
PERE VAULTS
UPPER RIGHT



PARIS 36 MAYBE
#90



SANS MILLESIME
EBAY 5E



FORGES DE LA
PROVIDENCE



DOUBLE IMPRESSION
"FR"



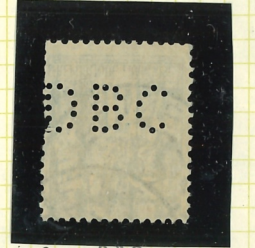
* 1B

CERES
10116 22E



* 2 1B

EBAY 52E



PD ROUGE
BEAUFOND 2964
EBAY 13E

1B C RAR
GENERATEUR BELLEVUE

EBAY 12E



PERFIN MM
MESSAGERIES
MARITIMES

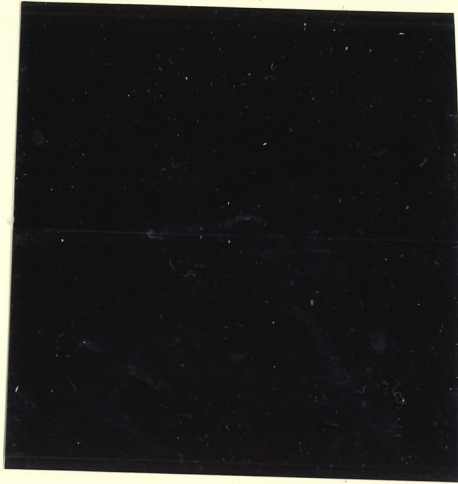
2 x 1B BOE
2 x CERES 10114 26E



PIQUAGE A CHEVAL

PERFIN
M
EBAY
#1
1B C
BRUS
ET
RR
EP
13E
PERFIN
DC

TB CDT * CHARNIERE IN MARGIN ONLY TB XX CDF TB



TB

60E PIGNAGE NOUVEAU

LINEAIRE TB STRASBOURG

240E



360E



XX HINGE IN MARGIN

TB

JAMET 75E

PIQ OBL

EBAY 8E BLEU SEINE

TI TB

PIQNGE DECALES - GAUCHE, DROIT, HAUT, BAS 4E EBAY TB TB EBAY 5E USED



14MM 222 EBAY 7E NO RECORD

EBAY 3E BEAUFOND 2964

TA BEAUFOND 26



PARIS DEPART AVEC SECTION LOVER EBAY 3E



RUGE TB EBAY 20E



PHILAMURAT TB 80E *



ANNULE CAISSE LA PARENTE BEAUFOND 1215

RECORSO



192 112

DEFECTIVE CORNER EBAY \$47. 41E CDF *



SMALL CHOCAL PERP VARIETY

CDP XX TB MAYBE STAINED IN REAR EBAY 89



TA EBAY 10E



116 CLERS 79E 1017



IMPERFORATE USED ND RARE NEEDS UV LIGHT TO SEE #101 TB EBAY 31E



EBAY #12

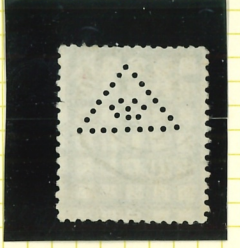
QUADRILLE

EBAY 12B TB



BEAUFOND 1564 PROVINCE
BUREAU DE DISTRIBUTION
MARTIGNY. LE COMTE
SAONE ET LOIRE

TB EBAY 5E



PERFORATION
FORGES DE LA
PROVIDENCE/
DELTA LUMINEX



PP CERLE

XX TB PIA. A CHEVAL



X TB EBAY 11A 13E

CDP ROUMET 134
a 14 13E

* TB REBUT COLLE PIQUAGE SUR BDF

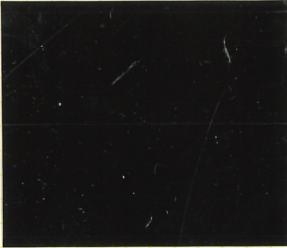


TRES RARE CERES 217E

R
I
10
SEPT
93

SEE
OTHER
ONE

PRE OBLIT. (RARE)



EBAY \$50.!!!!
SOME SHORT PERFS
OTHERWISE TB
(GENUINE)

(AR)



EBAY 4E BEAUFOND
3035

* TB



CERES 244E



LUGDUNUM 103+15 119E

2xX

2X

TB

AN OFFICIAL SCOTT ALEUM PAGE