



BR 4

VT 5

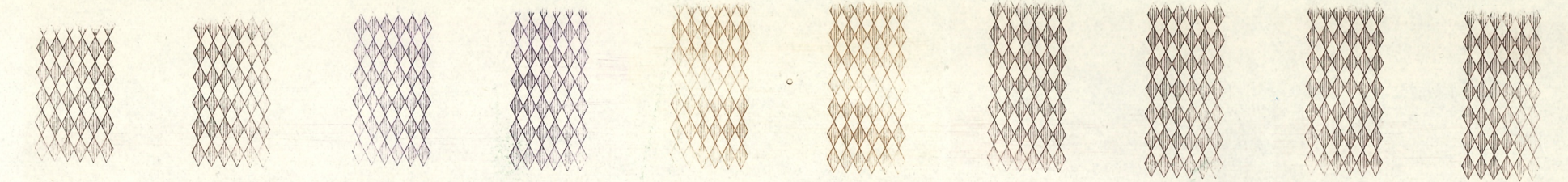
BL 8

73865

T.D.3-15

19.6.68



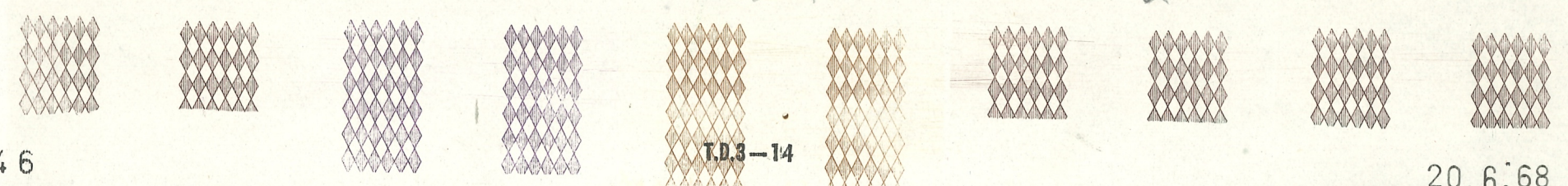


BR10

VT5

BR9

α

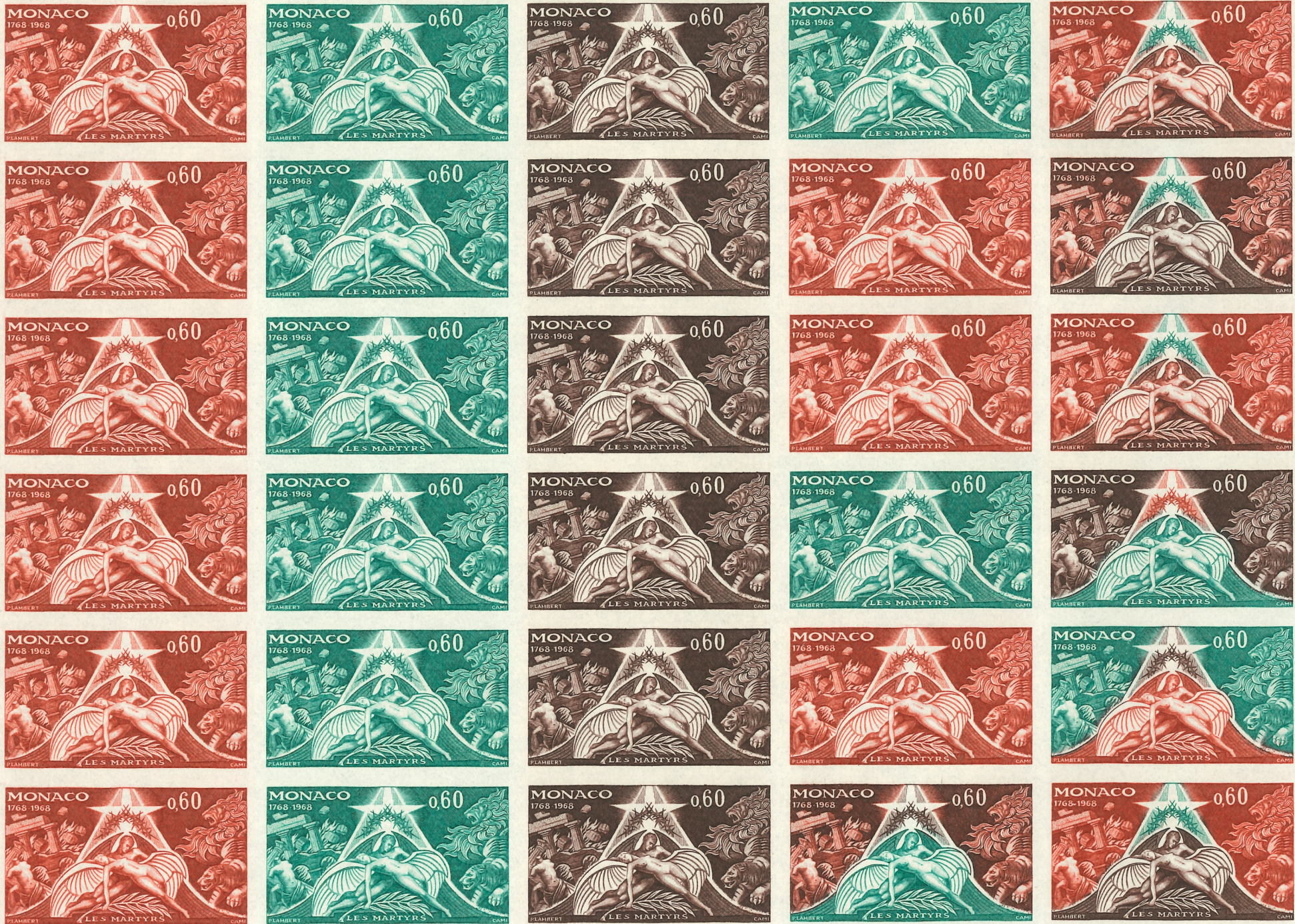
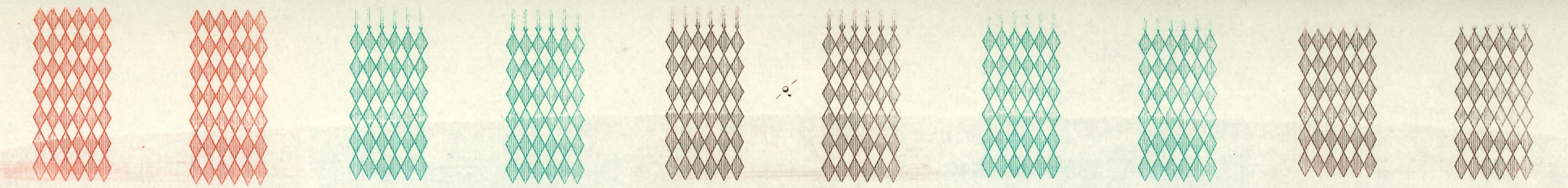


10546

T.D.3-14

20.6.68

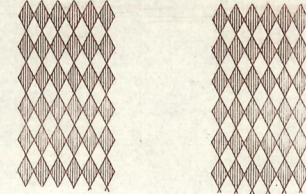
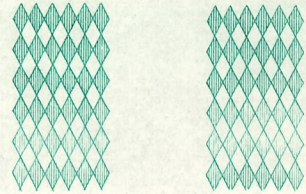
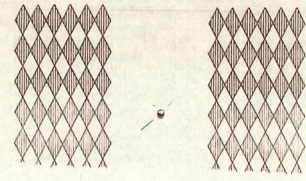
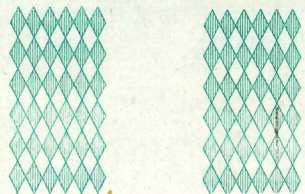
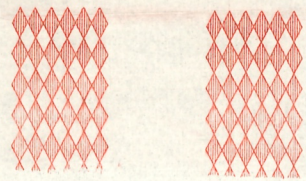




BR6

VE7

BR10

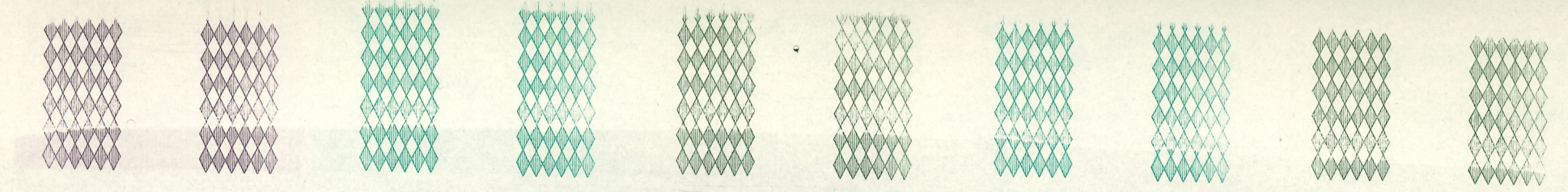


48455

T.D.3-16

25.6.68



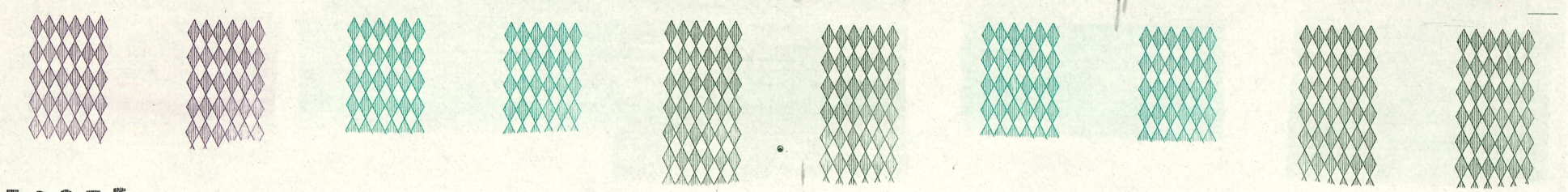


V75

VE7

VE8

7

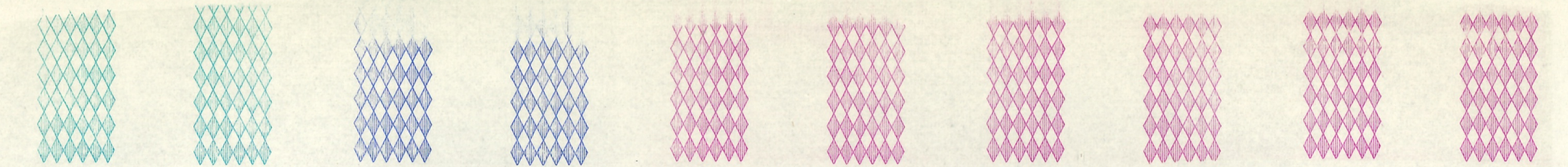


52935

T.D.3-16

19.6.68

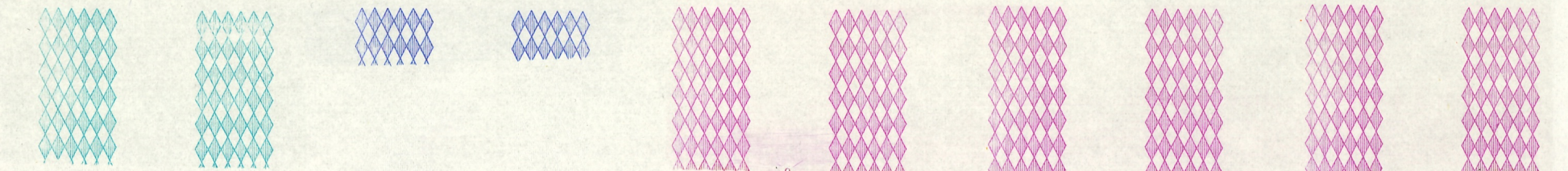




BL1

BL7

VT1

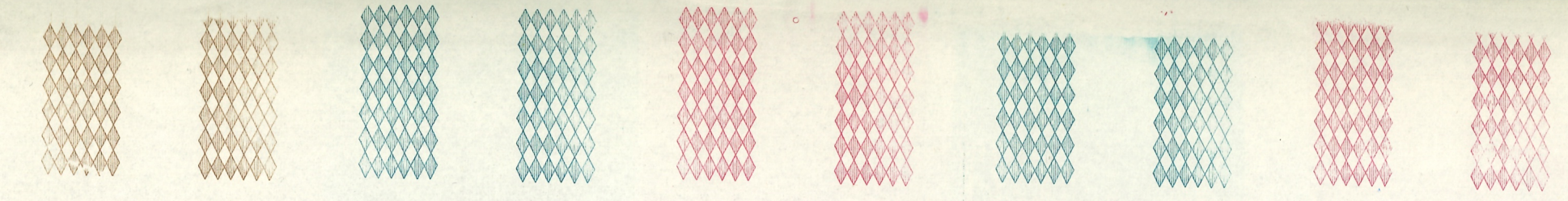


58925

T.D.3-16

21. 2.68

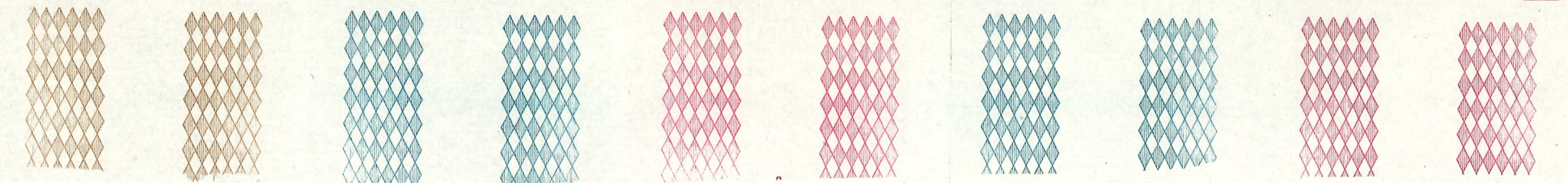




BR9

BL2

RO7



02474

T.D.3-16

19.4.68