

TYPE SAGE

PARIS

Mail returned to sender by the Recette Principale, Paris "sous franchise"

Franchise: **MINISTÈRE / DES POSTES ET TELEGRAPHES**

Date stamp: **PARIS / S^{ON} DES CONTRE-SEINGS**

The returned letter from Montargis to Paris. 6 March 1879.



TYPE SAGE.

UNDELIVERED MAIL

REBUTS DE PARIS. (Returned letter office)

PARTI SANS ADRESSE



27 September 1879.

Paris, Place du Theatre Francais to Paris.

Four unsuccessful attempts at delivery by the postmen of the Pont Neuf office as shown by their statement PARTI SANS ADRESSE accompanied by their personal handstamps.

The letter was forwarded to the REBUTS at the Recette Principale on 30.9.

The rebuts would either send the letter back to the sender or, if this was not possible, hold it for a period after which it would be pulped.



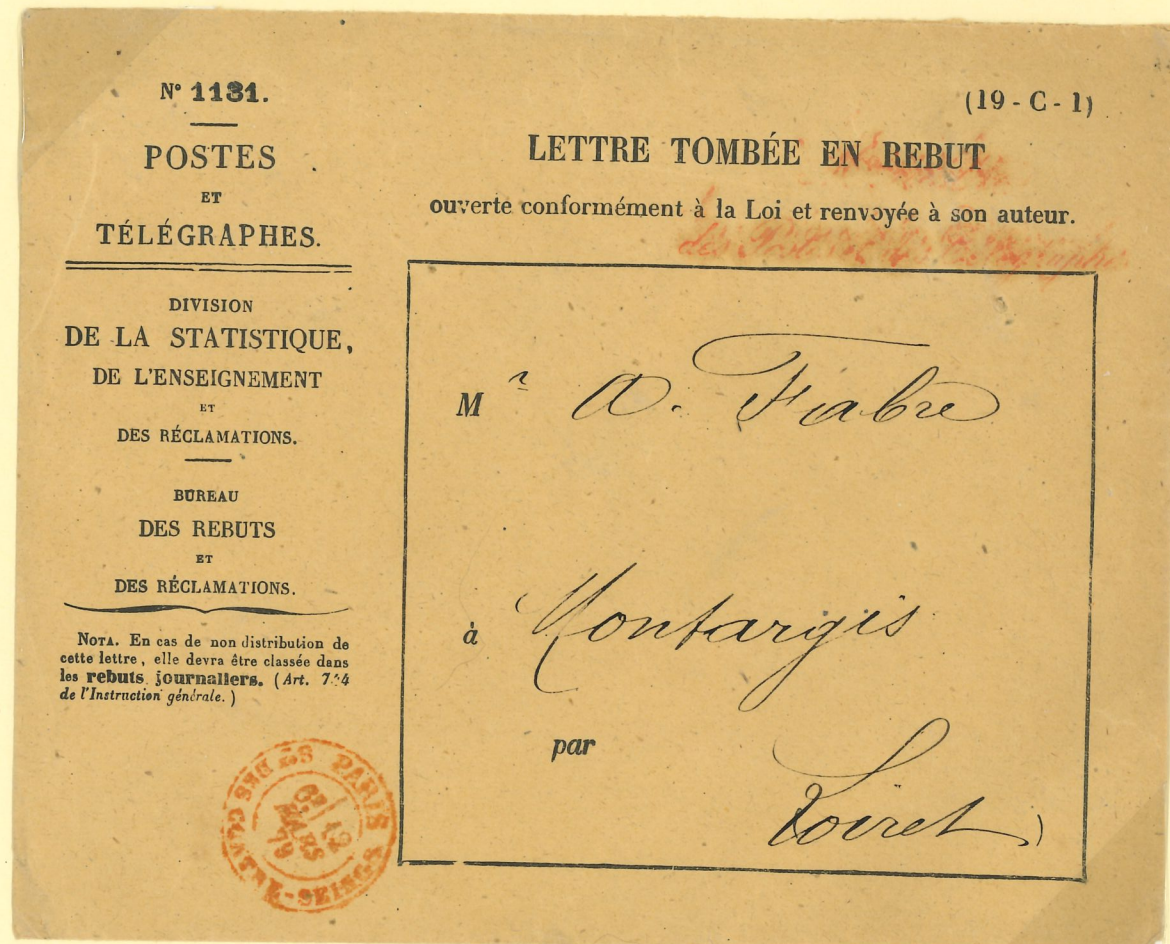
TYPE SAGE

PARIS

Mail returned to sender by the Recette Principale, Paris "sous franchise"

Franchise: **MINISTÈRE / DES POSTES ET TELEGRAPHES**

Date stamp: **PARIS / S^{ON} DES CONTRE-SEINGS**



6 March 1879

Letter from Montargis (Loiret) to Paris

This could not be delivered despite several attempts by the Paris / Gare d'Ivry office as the addressee was unknown. The letter was opened "Decachetée" to find the ender only to find a statement with only his name. The R.P. returned it to Montargis using envelope form 1131 on 12.3 and it was received there on the next day.

NOTE. The date stamp **PARIS / S^{ON} DES CONTRESEINGS** is not listed by de Beaufond but is illustrated in Cuny / Delwaille *Les cachets à date manuels de la R.P. de Paris* (F.M. supp 292)

TYPE SAGE

UNDELIVERED MAILS.

RECLAMATIONS M



1 March 1901

Bourg-en-Bresse (Ain) to Pont d'Ain (Ain).

Received at Pont d'Ain 1.3

Could not be delivered – explanation is covered by the Rebut etiquette.

After one month forwarded to Priay (Ain) 2.4

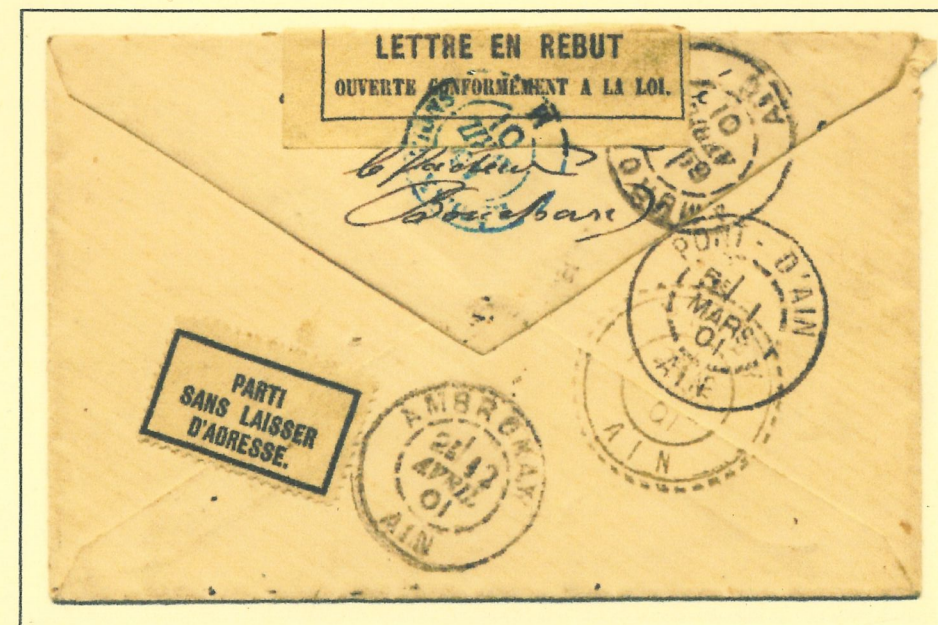
Marked **PARTI / SANS LAISSER / D'ADRESSE** with gummed etiquette.

Forwarded to Paris Reclamations

RECLAMATIONS / 16 AVRIL / 01 / M

Resealed and returned to sender with gummed label (in separate envelope)

**SOUS SECRÉTARIAT D'ÉTAT
DES POSTES ET DES TELEGRAPHES
LETTRE EN REBUT
OUVERTE CONFORMÉMENT À LA LOI**



TYPE SAGE

RECLAMATIONS.

This letter was handled by the **Reclamations** section of the Paris, Recette Principale because there was an element of taxation involved.



Unpaid letter from Marseille to Marseille.

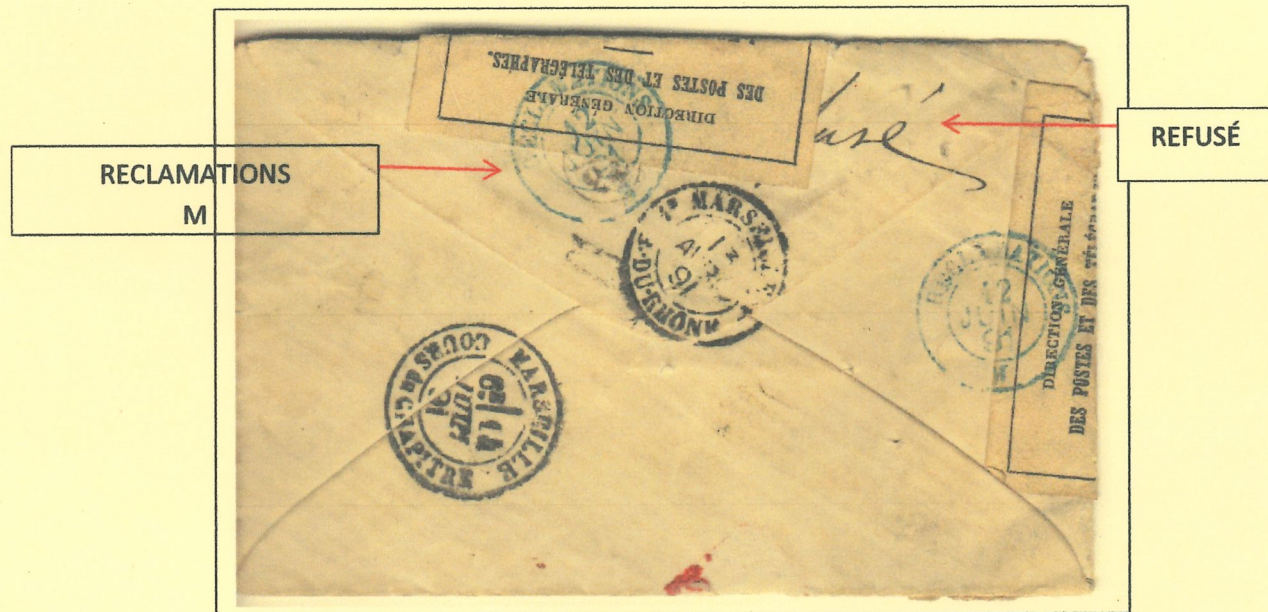
12 April 1891.

Taxed at 30c and refused by addressee on 13.4

Sent to **Reclamations** for verification of sender and returned, sealed and stamped with the **Reclamations / M** handstamp on 12.6

Returned to Marseille, Cours du Chapitre 14.6 who taxed it and presented it again (15.6)

Why the long delay?



Resealed with official label

DIRECTION GÉNÉRALE
DES POSTES ET DES TÉLÉGRAPHES
LETTRE EN REBUT
OUVERTE CONFORMEMENT À LA LOI

TYPE SAGE.

PARIS.

Reclamations.

**RETOUR
A L'ENVOYEUR
RECLAMATIONS**



Dieulefit (Drome) to Rio de Janeiro, Brazil

Franked 25c for the foreign rate.

31 January 1900

The addressee could not be located. Following the efforts made a number of stamps are applied including **REFUGIO** and **POSTA RESTANTE**. It was returned to Paris where the red return to sender handstamp was applied.

Note. This handstamp differs from the one generally seen which is struck in blue ink;



TYPE SAGE

RETURNED MAIL

RETOUR A L'ENVOYEUR / RECLAMATIONS.
RECLAMATIONS R.E. (Rebut Etranger)



7 November 1883.

Cette to Rivesaltes (Pyr. Orientales)

Franked 15c internal rate.

Redirected to Narbonne & then to Valencia Docks (Spain)

M/s " unknown " at Valencia.

Red h/s " France // Rebut / Poste " (Application?)

Returned to Service des Reclamations, Paris.

Application " Retour a l'Envoyeur / Reclamations " and

Cds " Reclamations R.E. " (Rebut Etranger)

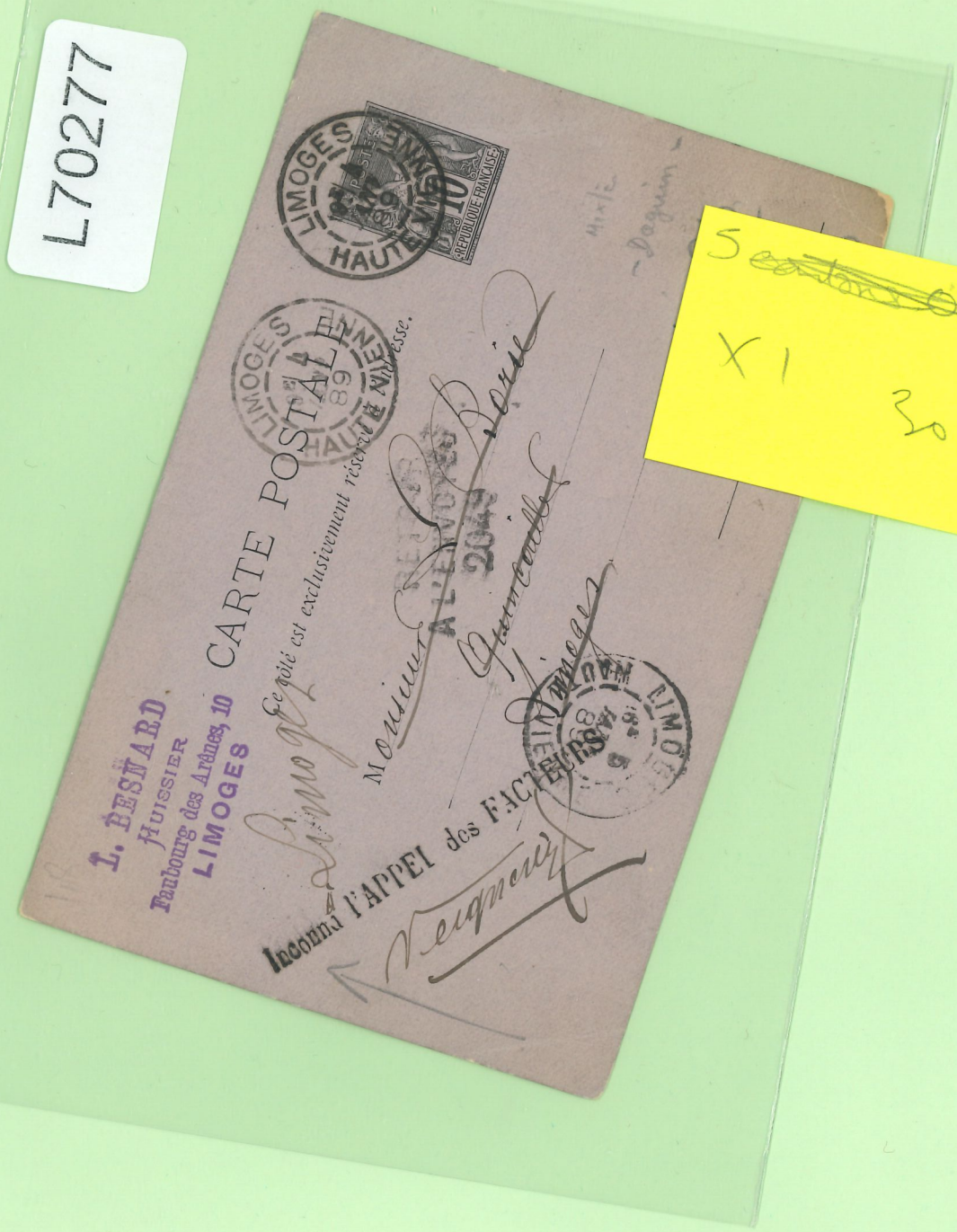
Returned to Cette where letter taxed 20c postage due
under UPU agreement of 1.4.1879 representing double
the deficiency on the basis of the overseas postage rate.

25c - 15c = 10c X 2 = 20c.

The 20c type Duval of 1881 is scarce when used on its own.



L70277



TYPE SAGE

MISSENT MAIL.

"MISSENT TO BOSTON MASS. / USA"



17 July 1896

Le Mont St Michel (Manche) to Boston.

Franked 25c for the foreign rate (Tariff of 10.2.1879)

m/s comment

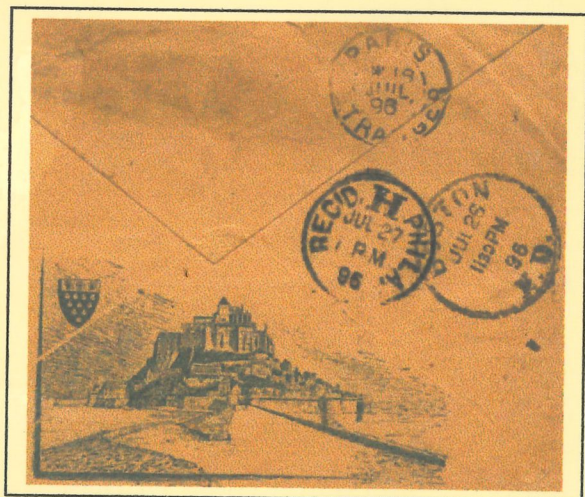
"There s a Chestnut Hill near Boston but that is no excuse for this being missent as it was distictly directed to Philadelphia."

Reverse shows:-

Paris Etranger. 18 July.

Boston 26 July

Philadelphia 27 July.



TYPE SAGE

MISSENT TO NEW YORK

New York handstamps on one and two lines.



22 October 1888.

Paris-2, Rue Milton to London but via New York.

Arrived London 16 November. Incorrectly franked 15c instead of 10c.



18 March 1901.

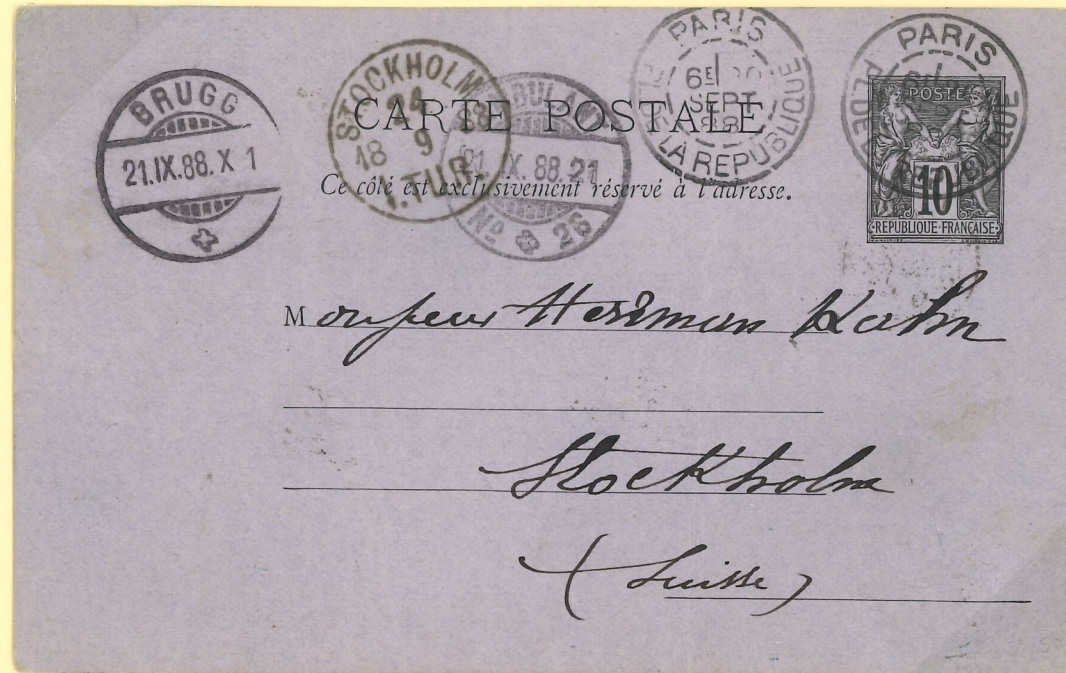
Le Havre (Seine Inferieure) to Grasse (Alpes Maritimes) but via New York.

Arrived Grasse 6 April

TYPE SAGE

WHAT WENT WRONG WITH THE MAIL.

France to Sweden.....via Switzerland.



20 September 1888

10c postal stationery card from Paris-5 Place de la Republique to Stockholm, Switzerland.

Transit. Swiss Ambulant 26 21.9 (TPO)

Brugg 21.9

Received at Stockholm 24.9

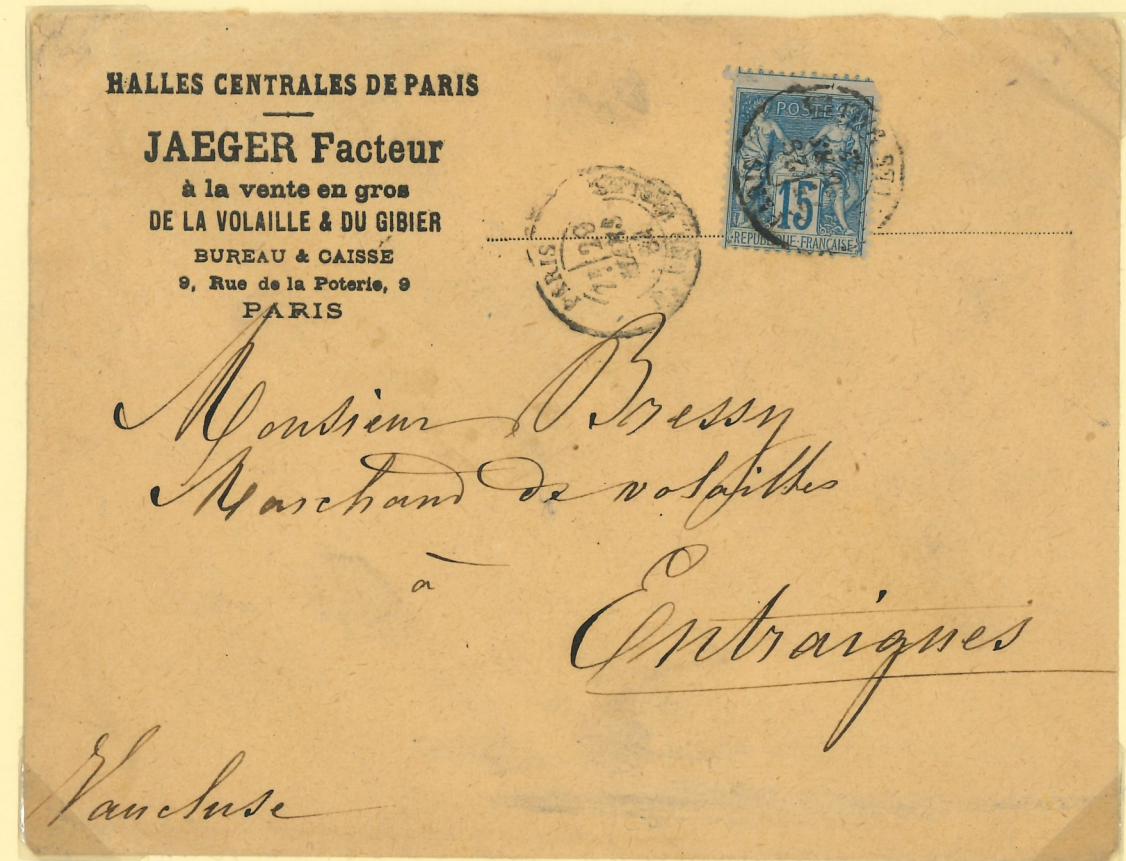


Even though the letter was addressed to Switzerland instead of to Sweden the journey time was only 4 days.

TYPE SAGE

MISDIRECTED MAIL.

SAME PRONOUNCIATION – DIFFERENT SPELLING.



29 March 1884.

Paris, Rue des Halles to Entraigues (Sur la Sorgue), Vaucluse.
Missent to Antraigues (s-Volane) Ardeche.



(X 1.5)

TYPE SAGE

PROBLEMS WITH THE MAIL.

Found damaged at the post office and then taxed!!.



Bordeaux (Gironde) to Astaffort (Lot & Garonne)

21 November 1892

Transit: Agen 21.11

Received damaged by Agen *Parvenu en cet état à Agen*

Astaffort tied it with string and applied two wax seals.

The letter was 3rd weight step (30-45 grams) but franked for single rate- 15c instead of 45c.

Taxed 60c – double deficiency of 30c. (tariff 16.4.1892)



TYPE SAGE

MAIL FOUND IN LETTERBOX IN POOR CONDITION.



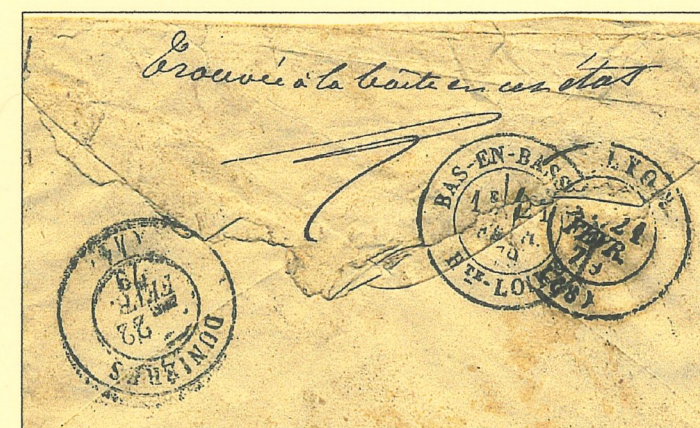
21 February 1879

Bas-en-Basset (Haute Loire) to Dunières (Haute Loire)

m/s *Trouvée à la boîte en cet état.*

Transit Lyon (68) 21.2

Received at Dunières 22.2



TYPE SAGE
MARITIME MAIL.

A letter from Martinique to France, redirected to Scotland.



11 August 1899
St Pierre, Martinique to Paris. Franked 15c (Tariff of 1.1.1899)
Carried by **Line A** mailboat *Lafayette* (postal agent No 1)
Dep: St Pierre 11.8 Arr: St Nazaire 23.8
Immediately redirected **through the post office** to Edinburgh, Scotland
with the addition of 2 x 5c Sage to make up the foreign rate of 25c (tariff of 1.5.1878)
Posted at Paris-90, r Fontaine 24.8
Received at Edinburgh 25.8 (7 pm)

TYPE SAGE
POSTCARDS.
REDIRECTION ABROAD.



7 February 1894
Paris 38-rue Claude Bernard to Helsinki, Finland and redirected to Berlin.

Transit: St. Petersburg, Russia 10.2 (Julian 29.1)
Viborg 11.2
Helsinki arrival and departure 11.2 & 12.2
St Petersburg main office 13.2 (Julian 1.2)
Berlin 15.2

Franked 10c (T.1.4.1879)

TYPE SAGE

PROVINCES
RECLAMATIONS.

RECLAMATIONS
TOULOUSE



Treatment of a letter franked with a stamp which had been already postally used.

17 May 1891
Lavour (Tarn) to Toulouse.
"T" mark applied and Lavour cds alongside.

Taxed 30c being the unpaid letter rate (double deficiency 2 x 15c)
Cancelled with the RECLAMATIONS / TOULOUSE cds 23.5

NOTE A dossier must have been produced (see pin holes in envelope) and the letter released to the addressee by the Rebut/Reclamations service against the payment due.

TYPE SAGE

UNDERPAID MAIL RECEIVED FROM ABROAD

Following the Rules of the Congress of Paris (1879) mail between member countries was taxed at double the deficiency.



12 December 1898
London to Paris.

Privately printed postcard franked at 1d but not accepted by the UK Post Office and taxed as if it were a letter. The Foreign letter rate was 2 1/2 d.

Taxed at deficiency of 15c x 2 = 30c. Use of 30c red postage due adhesive.
The card was refused..m/s "Refuse" and postmans mark in oval "3 / 22"
Boxed "Refuse"
cds of "Paris / 14 Rayon Central 14".who dealt with problems of distribution.

TYPE SAGE.

TROUVE A LA BOITE

Treatment of irregularly posted mail.



12 August 1905
 pc from Bordeaux to Bordeaux
 cds Recette auxiliaire urbaine (scarce)
 BORDEAUX-LES-CHARTRONS-A / GIRONDE
 Late use of Sage.
 Franked 5c >5 words/illustrated.
 5c cut out from ps envelope.

TYPE SAGE

PROBLEMS WITH THE MAIL.

Incorrect use of cut out embossed stamps from postal stationery cards and envelopes. These should have been taxed.



22 March 1888
 Posted in rural box "I" of Carcassonne (Aude)
 Transit: Swiss ambulant No 4 23.3
 Received at Berne 23.3
 Franked 25c (Foreign rate 1.5.1878)
 (15c + 10c cut out from ps card.)

TYPE SAGE

INCORRECT USE OF A POSTAL STATIONERY CARD.



23 August 1893

North Walsham, England to Frankfurt, Germany and redirected to Werdau.

This postcard has been incorrectly accepted by the North Walsham office who have cancelled it with the oval 588. An unusual and non-philatelic use of a French card used between the U.K and Germany.

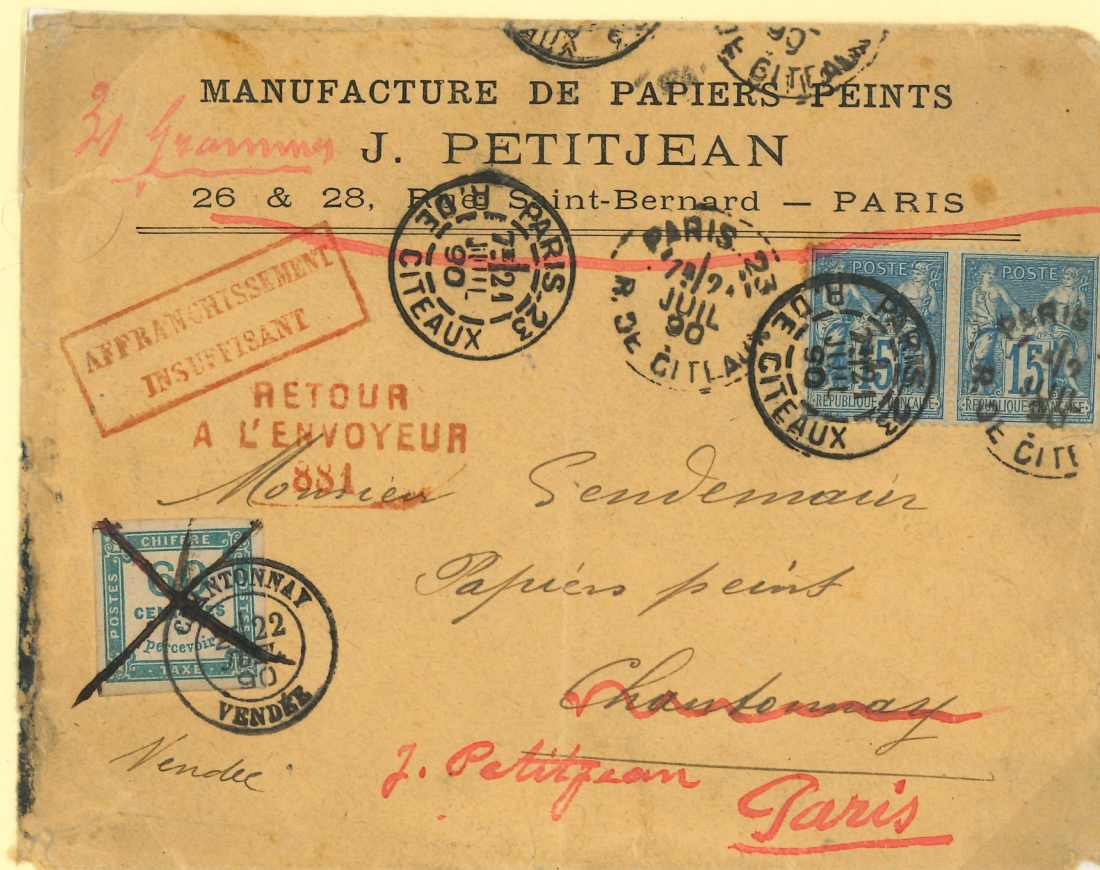
The card is written in French ".....the servants read the cards which is why I have written in French"

TYPE SAGE

POSTAGE DUE.

Insufficiently paid mail.

From 1.5.1878 to 15.4.1892 unpaid letters were taxed double deficiency; i.e. 30c per 15 grams. Partly paid letters were taxed at the unpaid rate less the value of stamps affixed.



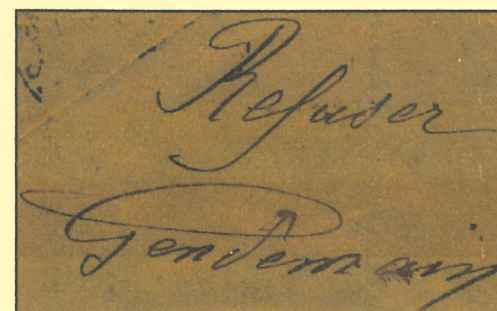
21 July 1890.

Paris-23, r des Citeaux to Chantonnay (Vendée)

Franked 30c for the 2nd weight step to 30 grams.

m/s 31 grammes and red boxed "affranchissement insuffisant" added.

Taxed 60c by Chantonnay on 22.7 using the 60c blue "chiffre taxe carée" and refused in writing on the reverse by addressee. The postage due stamp was then cancelled out in ink by Chantonnay and returned by them (Retour/à l'envoyeur/881) to the sender. Received at Paris 24.7



Postage due calculation.
3rd weight step (30-45 grams) is 45c x 2
= 90c - 30c paid = 60c

TYPE SAGE

MAIL DELIVERY PROBLEMS.

Mail returned to sender.



29 July 1891

Unpaid letter from the Juge de Paix du canton de Montluel (Ain) to Lyon.

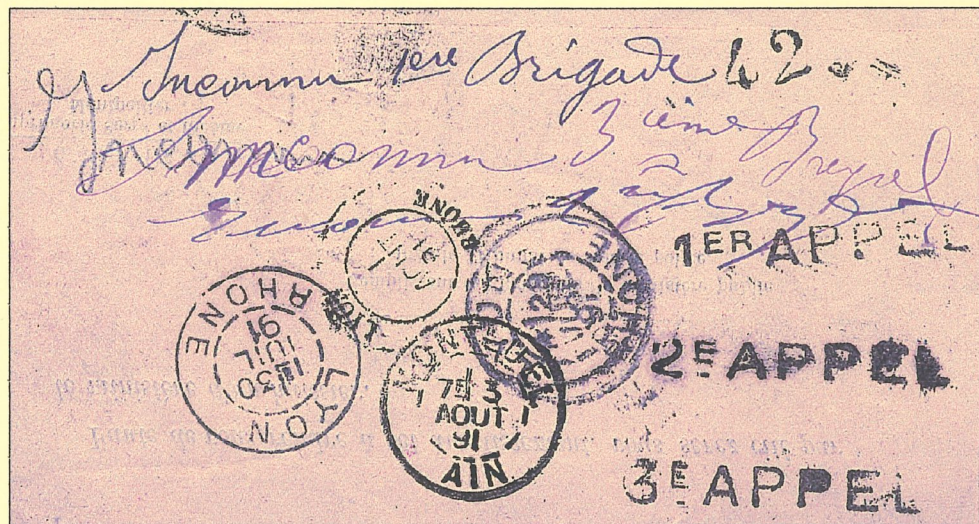
"T" applied by Montluel.

30c chiffres tax put on by Lyon but cancelled as delivery was unsuccessful.

Inconnu 1ere, 2ieme, 3ieme brigade with corresponding stamp 1er, 2e, 3e Appel.

Lyon ds of 29.7, 30.7 and 1.8 (type 18)

Returned to sender with violet *Retour/ a l'Envoyeur/ 2145* of Lyon. (unusual ink colour)



TYPE SAGE PERIOD

Taxed mail refused.



Perigueux (Dordogne) to Carsac (Dordogne)

20 June 1884

Sent unpaid by the 'Greffier' of the Conseil de Prefecture de la Dordogne.

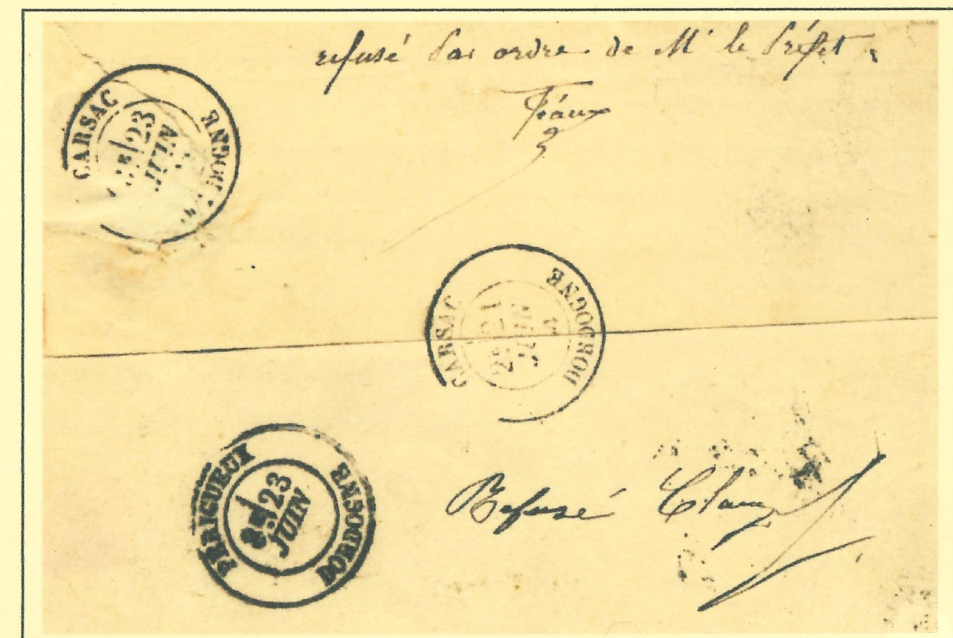
Received at Carsac 21.6 and taxed 30c with 30c Banderolle.

Refused by the addressee and returned to Perigueux

Taxed again with 20c + 10c Banderolle, cancelled by Perigueux.

Refused on presentation to sender. *Refuse par l'ordre du Prefet*.

All of these postage due stamps were effectively cancelled out as no payment was forthcoming.



TYPE SAGE PERIOD

Refused Mail.



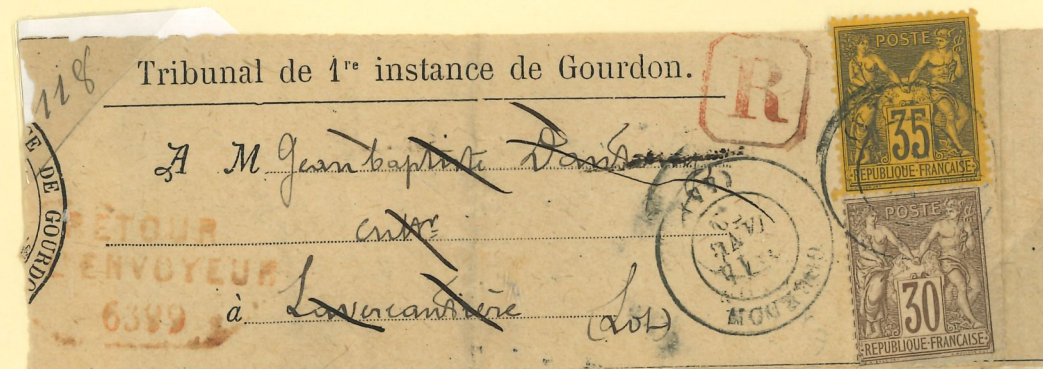
Savenay (Loire Inferieure) to Nantes (Loire Inferieure) 19 August 1904
 Unpaid letter from the court. Taxed 30c at Nantes (2 x 15c- tariff of 1.5.1878)
 The letter was refused on 1st and 2nd presentation. 30c banderolle postage due cancelled.
 Returned with 'Retour / a l'Envoyeur / 2602' of Nantes 20.8
 The Savenay office taxed the letter again and presented this to the Tribunal where it was refused on 1st and 2nd presentation. Boxed 'Refusé' handstamp. The postage due stamp was pen cancelled again signifying non payment.
 The court summons related to an offence with a 'Velocipède non muni d'une plaque de controle'.

TYPE SAGE

REGISTERED MAIL

Returned to sender on the last day of the 50c registration rate.

*Destinataire decédé
 Heritier inconnu à Lavercantière
 (signature) Bourdarie*



14 Jan 1879
 Gourdon (44) – Lot to Lavercantière, Lot.
 Transit: Degagnac, Lot 15.1 & 17.1
 (The commune of Lavercantière (population 990 in 1884) was within the postal area of the Degagnac office- 4 km distant.

The Degagnac office returned the letter to Gourdon because the addressee had died and the heirs were not known to the post office.

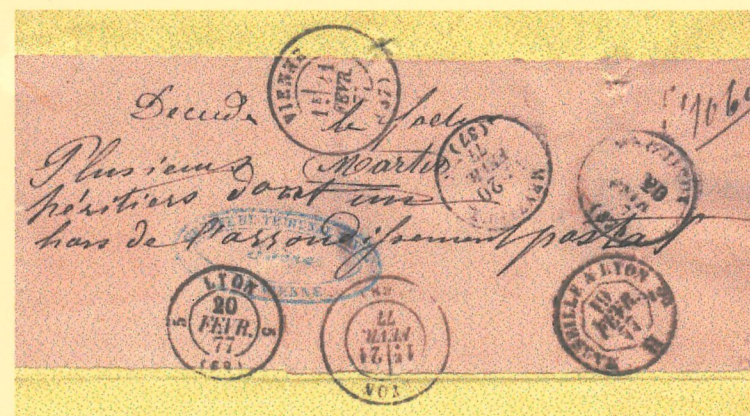
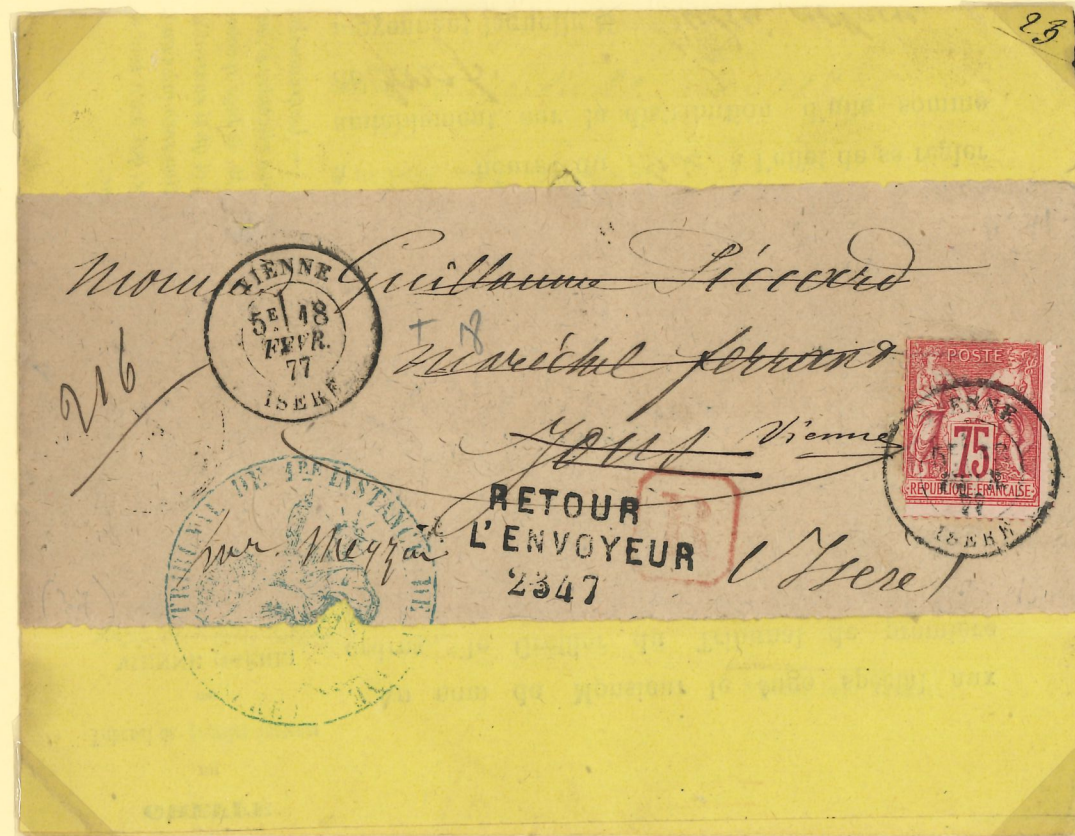
RETOUR / A L'ENVOYEUR / 6399 = Degagnac.
 6399 is a 'numero blanc'. Degagnac was opened as a 'distribution' in 1873 and a 'recette' in 1874.

Franked 65c.
 Postage 15c (tariff of 1.5.1878) + registration 50c (tariff of 1873.)

Note. Extremely unusual franking with the combination of the 35c and 30c.



TYPE SAGE
 REGISTERED MAIL
 RETURN TO SENDER.



Franked 75c	
Postage	25c Tariff of 1.1.1876
Reg.	50c Tariff of 2/1873
Reverse shows:	
19 Feb.	Marseille-Lyon day Ambulant 2° A.
20 Feb	5 Lyon 5
20 Feb	Meyzieux (37)
21 Feb	Lyon (68)
21 Feb	Vienne (37)

18 February 1877
 Registered letter from Vienne (Isere) to Meyzieux (Isere) via Lyon.

Retour a l'Envoyeur 2347 = Meyzieux.
 Reason for return: "Decede - Plusieurs heritiers don't un hors de l'arrondissement postal" (Deceased - several heirs of which one outside of the postal area)