

EXTRAITS

1892. TYPE GROUPE

1 c. noir sur azuré 41	2 c. lilas brun sur paille 42	4 c. lilas brun sur gris 43	5 c. vert 44
------------------------------	--	--------------------------------------	--------------------

10 c. noir sur lilas 45	15 c. bleu 46	20 c. brique sur vert 47
-------------------------------	---------------------	--------------------------------

25 c. noir sur rose 48	30 c. brun 49	40 c. rouge orange 50
------------------------------	---------------------	-----------------------------

50 c. rose 51	75 c. violet sur jaune orange 52	1 f. vert olive 53
---------------------	---	--------------------------



1900. "N.C.E."

et valeur, dans un cercle, en surcharge sur timbres précédents



VARIETES

41 noir sur azuré	41 a noir sur gris	41 b noir sur jaunâtre	41 c noir sur bleu	42 a brun rouge sur jaune	42 b brun foncé sur jaune
-------------------------	-----------------------	------------------------------	--------------------------	---------------------------------	---------------------------------

37a
lilas brun
foncé sur
azuré

45 a
noir sur rose

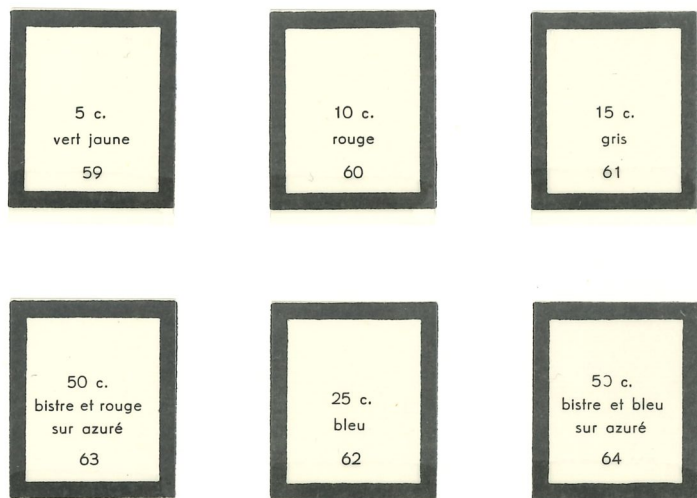
Non Répertoriés
Faux ??

cote

Non Répertoriés
Faux ??

cote

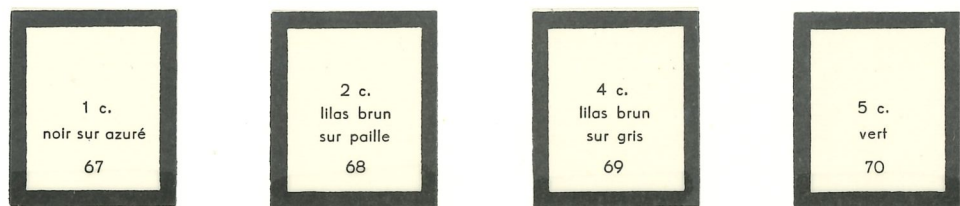
1900. TYPE GROUPE



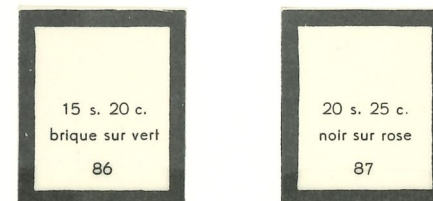
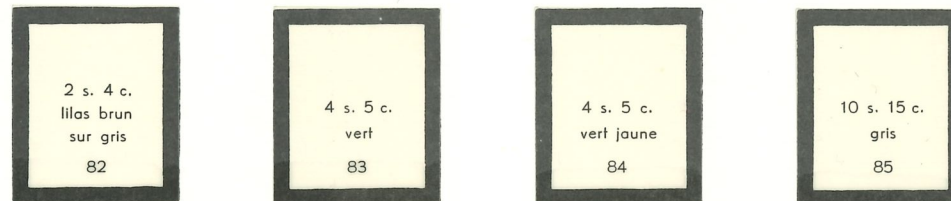
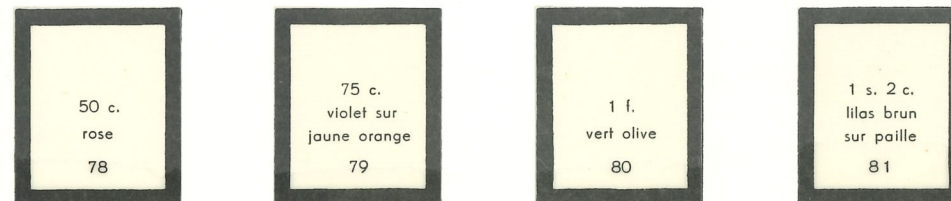
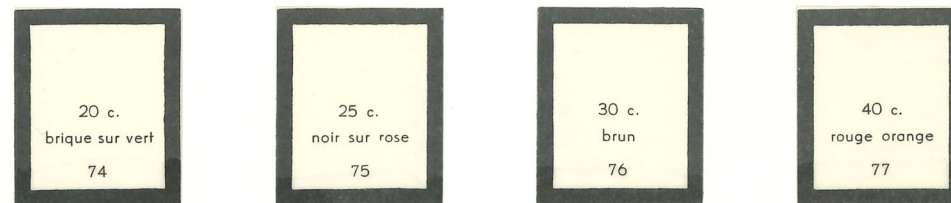
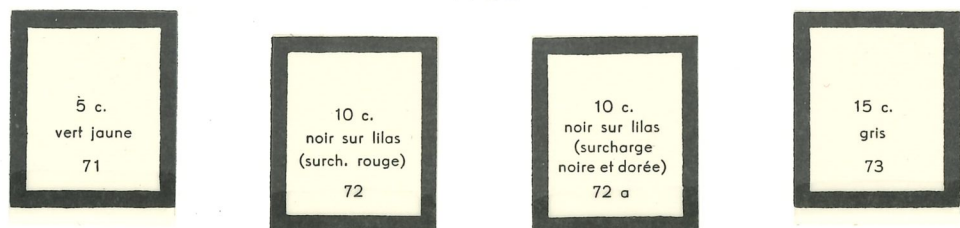
1902



CINQUANTENAIRE DE L'INFLUENCE FRANÇAISE



1903



1905. FAUNE ET SITE NÉO-CALÉDONIENS



* *





1912

Timbres de 1892-1900, surchargés



**

**

**

**

1915. CROIX-ROUGE

1918



M3c 77

1922. FAUNE ET SITE NÉO-CALÉDONIENS



1922



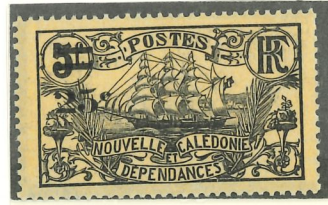
1924-1927



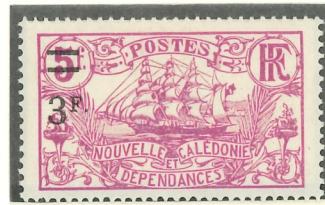
* *



* *



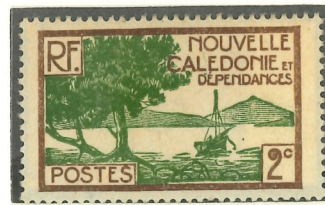
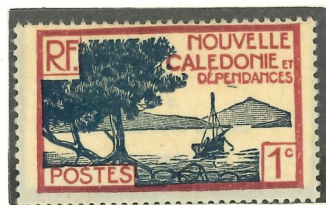
* *



* *



1928. SITES LOCAUX, EXPLORATEURS FRANÇAIS





EXPOSITION COLONIALE

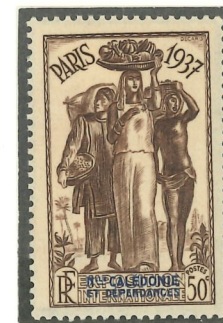
PARIS

1931



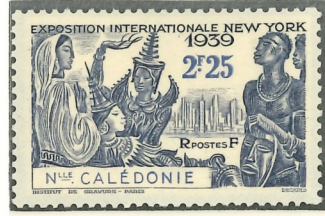
1937

EXPOSITION INTERNATIONALE DE PARIS



P. ET M. CURIE

EXPOSITION DE NEW-YORK



1939

150° ANNIVERSAIRE DE LA RÉVOLUTION FRANÇAISE

Tous 77

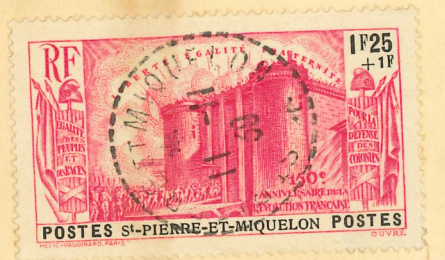


*Madame Gau
21 Rue de Lignac
Saint-Gauthier
France*

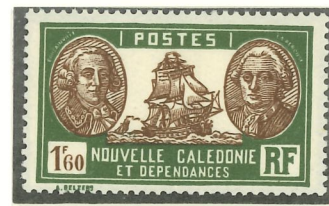
RF

150

Recommandé



1939. SITES LOCAUX, EXPLORATEURS FRANÇAIS



1942. LE CAGOU

Tous **





1938. HYDRAVION SURVOLANT LA CARTE DE L'ILE



150^e ANNIVERSAIRE DE LA RÉVOLUTION FRANÇAISE



1948. CARTE, PAYSAGES



**

**

UNION POSTALE UNIVERSELLE



1955

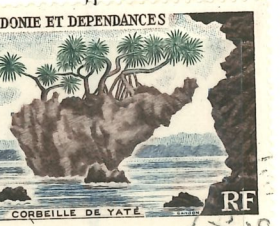
**

1954. LIBÉRATION



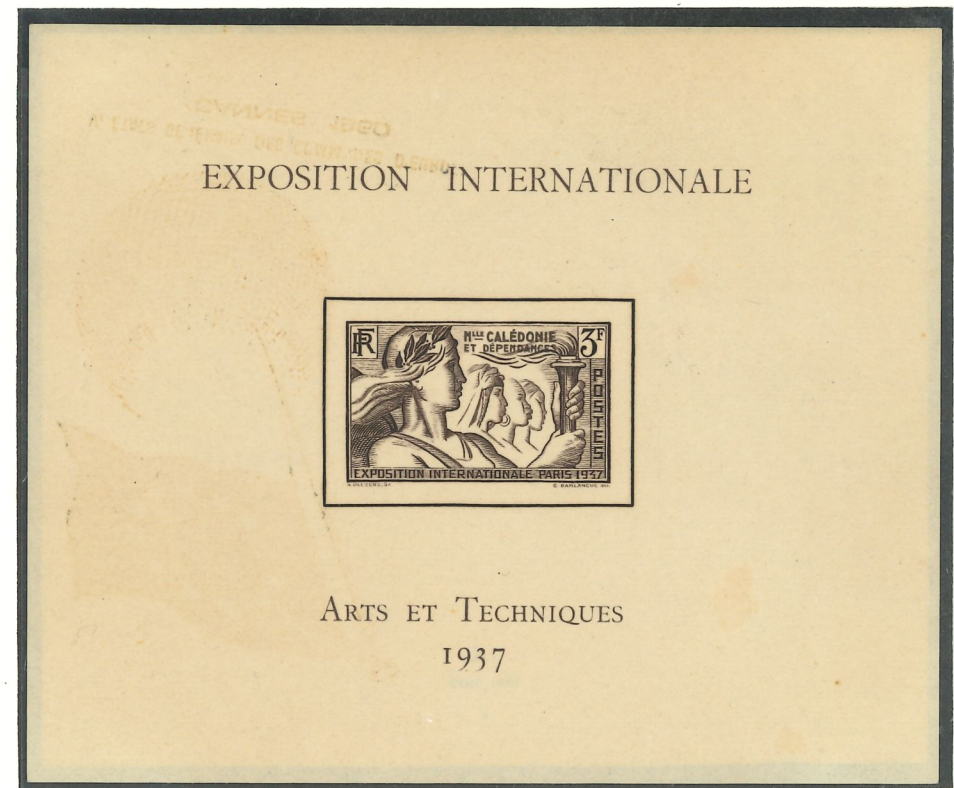
**

1955. PAYSAGES NÉO-CALÉDONIENS



BLOCS ET FEUILLETS

1937
EXPOSITION INTERNATIONALE
ARTS ET TECHNIQUES
PARIS



**

1906-1927



1928. CERF ET NIAOULI



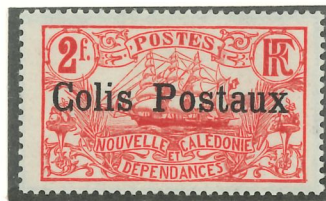
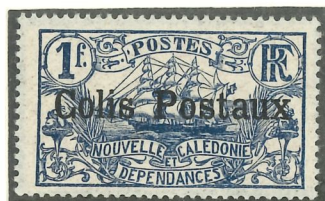
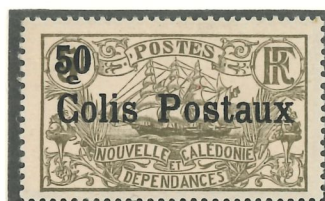
1948



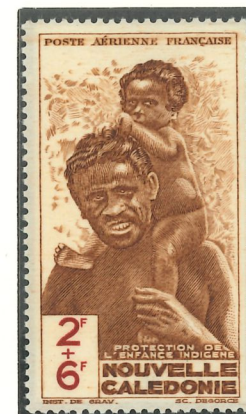
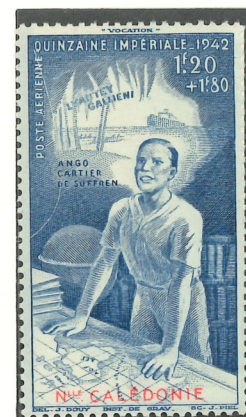
TIMBRES POUR COLIS-POSTAUX

1926. "COLIS POSTAUX". 1930

et valeur en surcharge sur timbres-poste



PROTECTION DE L'ENFANCE INDIGÈNE QUINZAINÉ IMPÉRIALE



1942. HYDRAVION SURVOLANT LA CARTE DE L'ILE. 1943

sans R. F.

